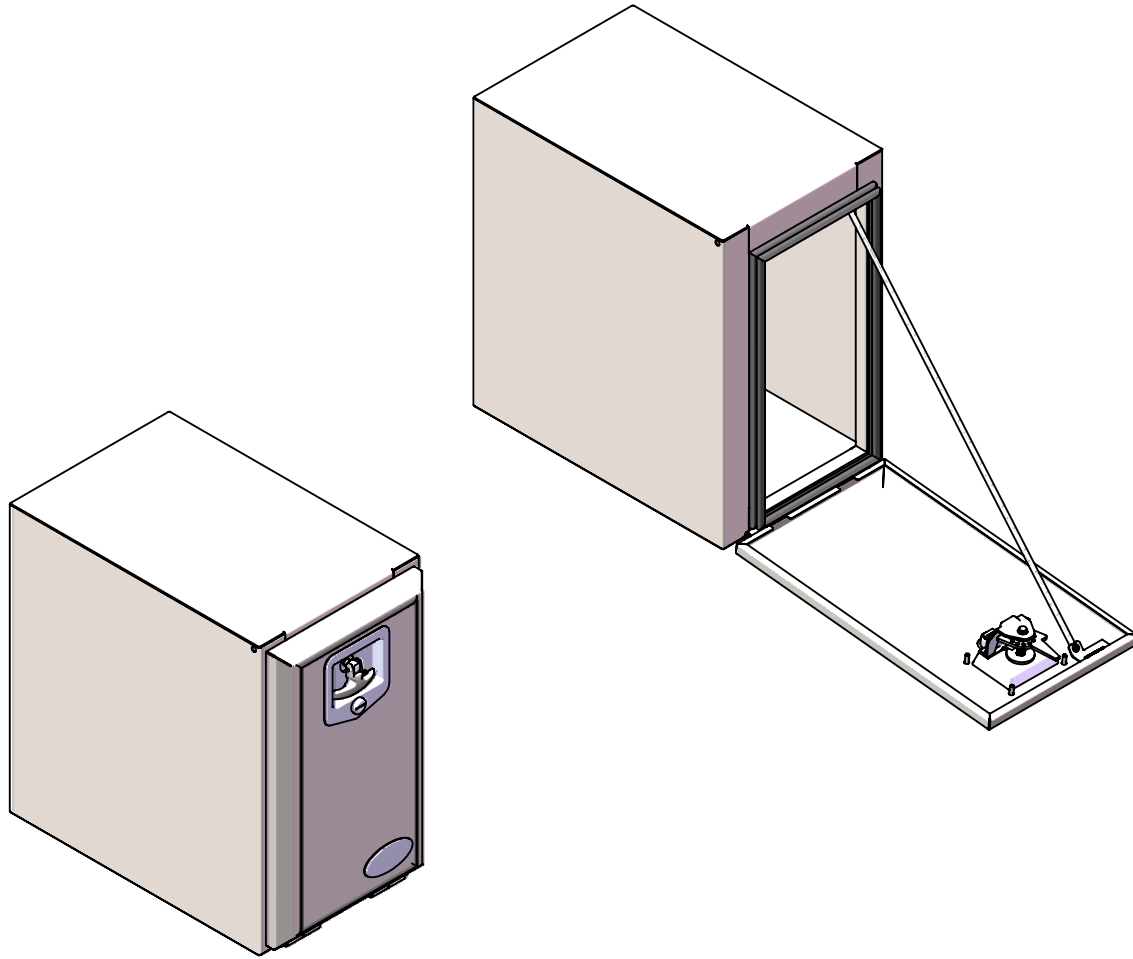
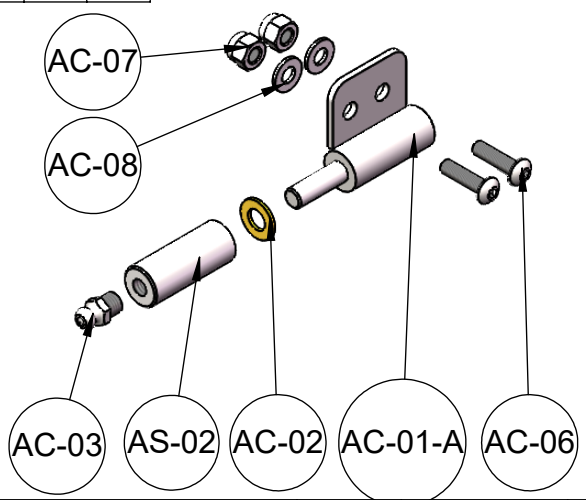
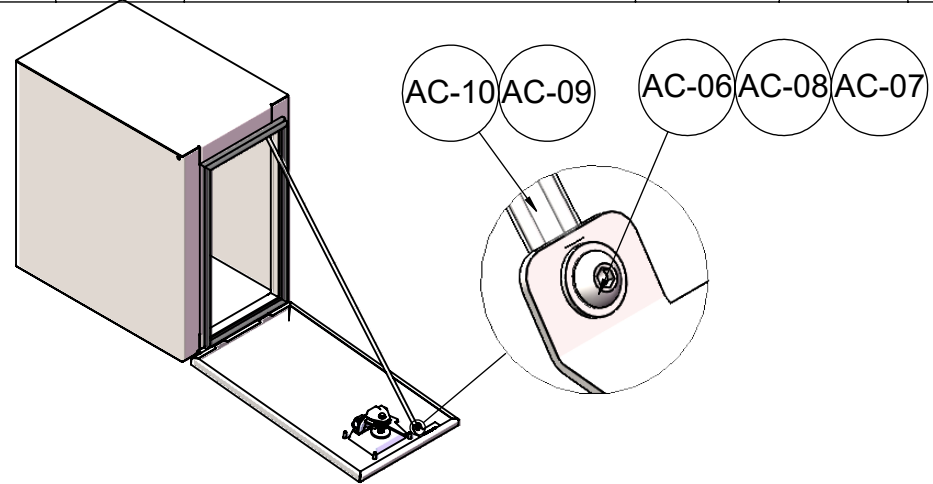


REVISIONS			
PRO REV	DATE	ALTERATION	AUTH
0	21-8-2023	As per client's order request	V1902

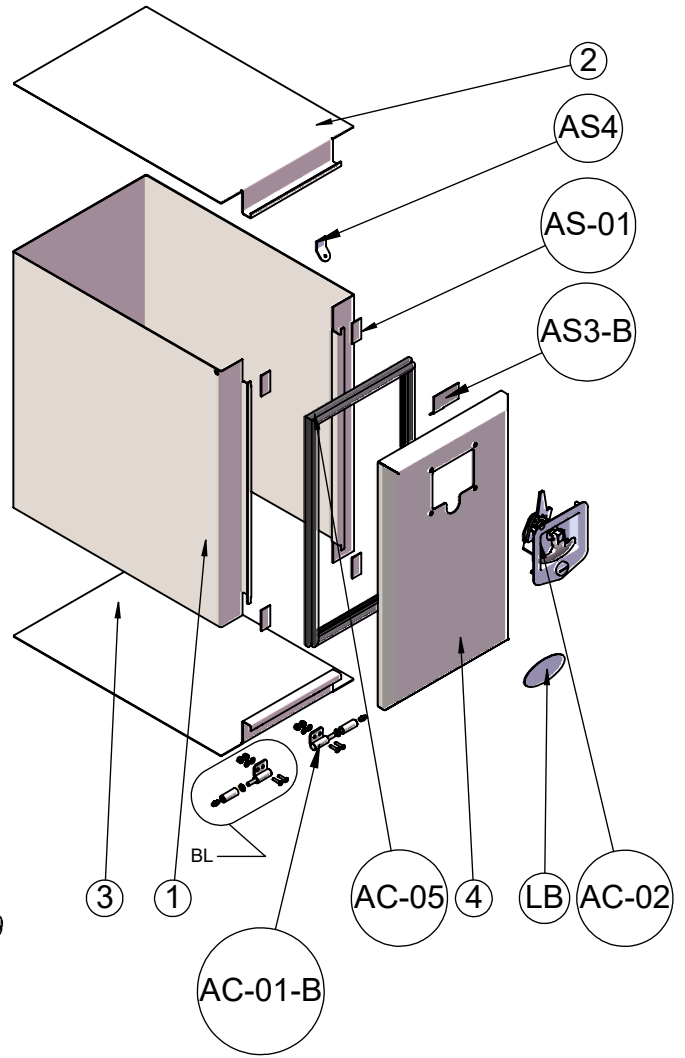


MO:	Batch:	Product Description: Beveled Lid Steel Tool Box with S/Steel Door L300xH500xD500	0	21-8-2023	As per client's order request					V1902			
Quantity Batch:	Product Code: 001-001-0113NZ		PRO REV.	DATE	ALTERATION					AUTH.			
Contract #:	Dwg Description: REVISION		Linear	>0-3	>3-6	>6-30	>30-120	>120-400	>400-1000	>1000-2000	>2000-4000	>4000-8000	Angle Tolerance
Contract Ref:	Client: Reid & Twiname	Client Code: TBA	→	±0.15	±0.2	±0.5	±0.8	±1.2	±2	±3	±4	±5	±1°
Approved By:	Date:	Client Dwg Ref: Reid & Twiname	Client Rev: 0	Flatness	>0-10	>10-30	>30-100	>100-300	>300-1000	>1000-3000			
Signature By:	Date:	Product Finish: Body: Black OGF/Smooth/Gloss 20-30%/RAL9005/Door: Mirror	→		0.1	0.2	0.4	0.8	1.2	1.6			
			NOTE: All dimensions in mm (unless noted otherwise)					W = 13.96 (Kg)	Sheet 1 of 3			3rd Angle Projection	

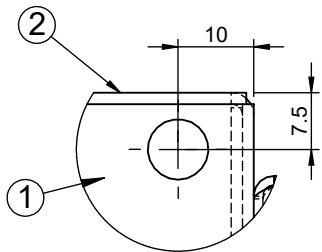
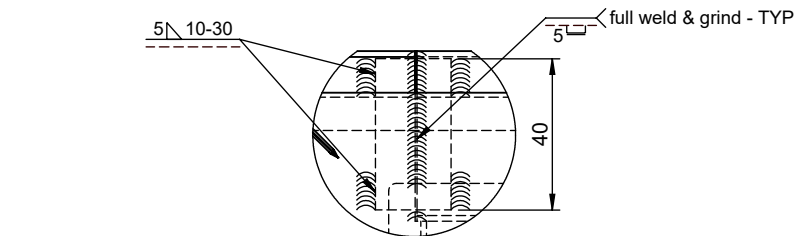
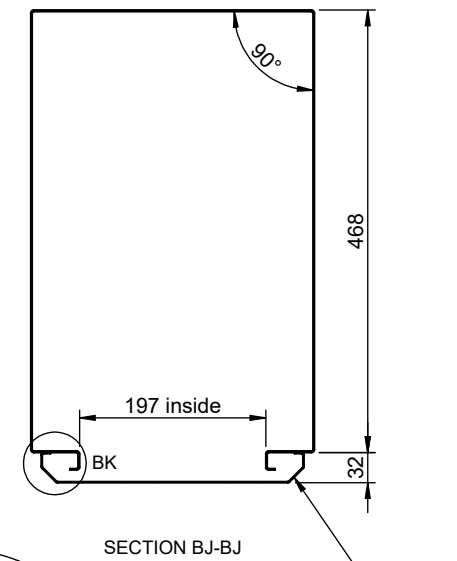
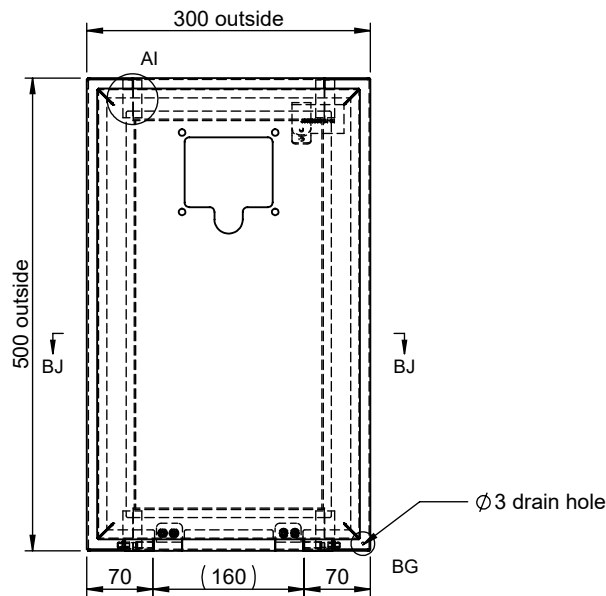
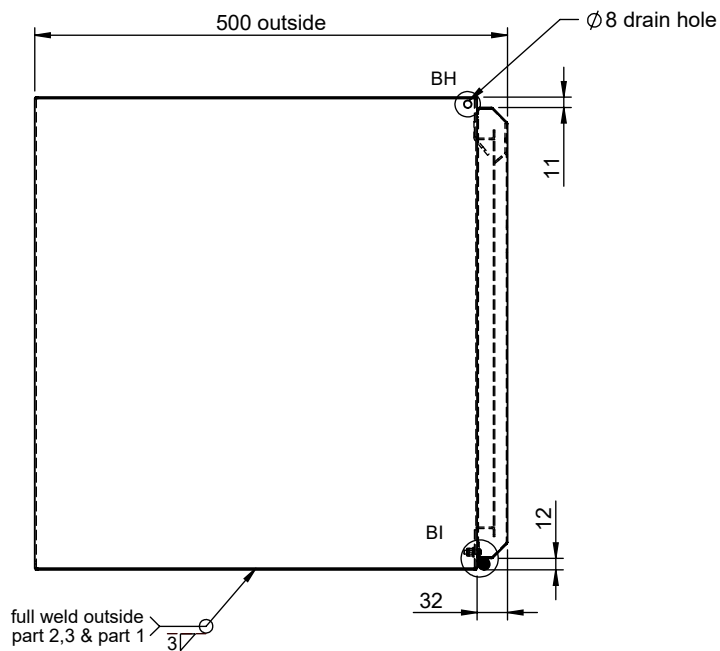
List of Part							
Part #	Code	Description	Material Spec	Size	Qty.	Unit	Total
1	901-040-0030-1	1.5(+/-0.15)mmT x 1250 x 2500 Hot Rolled Steel Sheet	SPHC JIS G3131	1379.3x497x1.5mm	1	Sheet	0.2194
2	901-040-0030-1	1.5(+/-0.15)mmT x 1250 x 2500 Hot Rolled Steel Sheet	SPHC JIS G3131	530x290x1.5 mm	1	Sheet	0.0000
3	901-040-0030-1	1.5(+/-0.15)mmT x 1250 x 2500 Hot Rolled Steel Sheet	SPHC JIS G3131	530x290x1.5 mm	1	Sheet	0.0000
4	903-040-0015-1	1.2(+/-0.1)mmT x 1220 x 2440 S/Steel Flat Sheet	SUS304 JIS G4305	535.3x336.3x1.2mm	1	Sheet	0.0576
AS-01	SFP-010-0050	Tool Box Corner Flange (Steel) 40x20x1.5mm	CT 3 (250 Mpa)	40x20x1.5mm	4	Pcs	4
AS-02	SFP-010-0160	Barrel Hinge Female Part (S-Steel) Weld on	Grade: 304	-	2	Pcs	2
AS3-B	SFP-010-0003RH	Tool Box (S-Steel)-Lanyard Bracket-Beveled Lid RH	304	-	1	Pcs	1
AS4	SFP-010-0004	Tool Box (S-Steel) - Lanyard Bracket - Body	304	-	1	Pcs	1
AC-01-A	SFP-010-0156	12mm dia Barrel Hinge Male Part (Steel) Bolt On LH	Steel	-	1	Pcs	1
AC-01-B	SFP-010-0155	12mm dia Barrel Hinge Male Part (Steel) Bolt On RH	Steel	-	1	Pcs	1
AC-02	914-096-0010	Flat Washer M6 x 6.1mmID x 12mmOD x 1mmT	Brass	-	2	Pcs	2
AC-03	915-060-0000	M6 grease nipple	Steel	-	2	Pcs	2
AC-02	915-006-0002	T-Paddle handle lock "Edge Style" (T-latch 50052) c/w Gasket & Key	Grade 304	-	1	Pcs	1
AC-05	915-008-0000	Rubber Dust Proof Seal , 8mm dia rubber seal Plastic pinch type (Use Lenght 1360mm)	Rubber	1150mm	1	Pcs	1
AC-06	914-016-0990	Hex socket (allen Key) & Domed Head bolt M4 x 15mm L x 0.7 pitch	Stainless Steel	-	6	Pcs	6
AC-07	914-047-0009	Nyloc Nut : M4 x pitch 0.7 Stainless Steel	S/Steel 304	-	6	Pcs	6
AC-08	914-098-0004	Stainless steel washer to suit M4 OD 10mm x 1mm	Stainless steel	-	8	Pcs	8
AC-09	915-013-0000	Stainless Steel chain 20mm x 8mm x 2mm (Use Lenght 646mm)	Stainless Steel	-	1	Pcs	1
AC-10	915-009-0005	8mm dia Black Plastic Heat Shrink (Use Lenght 646mm)	Plastic	646mm	1	Pcs	1
LB	919-100-0050	"RED FLAG Logo with www.retwine.co.nz"-Oval-shaped Label,90mmL x 45mmH	S/Steel 304	-	1	Pcs	1
BOX	920-203-2029	Card board Box (Girl/Boy: 3ply):L315xH515xD515 RED FLAG Logo with www.retwine.co.nz (sample 1 test)	Girl/Boy: 3 ply	L315xH515xD515	1	Pcs	1
GLUE	920-022-0012	Heavy Duty Adhesive Glue	-	-	1	Pcs	1



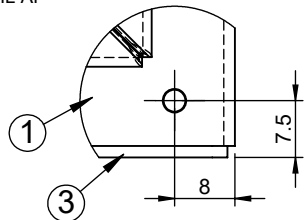
DETAIL BL



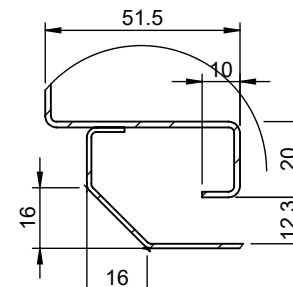
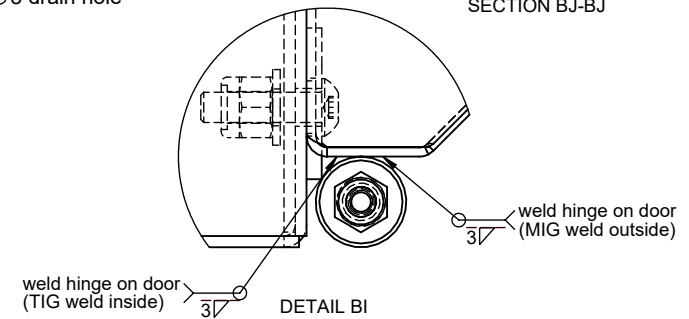
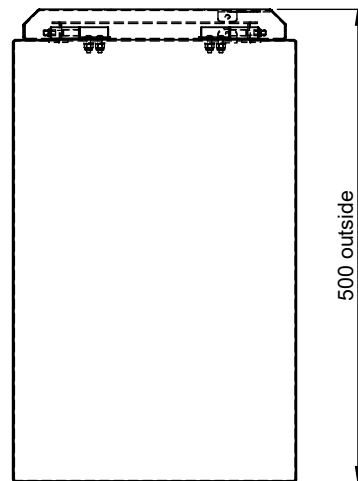
MO:	Batch:	Product Description: Beveled Lid Steel Tool Box with S/Steel Door L300xH500xD500	0	21-8-2023	As per client's order request					V1902			
Quantity Batch:		Product Code: 001-001-0113NZ											
Contract #:		Dwg Description: LIST OF MATERIAL											
Contract Ref:		Client: Reid & Twiname	Client Code: TBA										
Approved By:	Date:	Client Dwg Ref: Reid & Twiname	Client Rev: 0										
Signature By:	Date:	Product Finish: Body: Black OGF/Smooth/Gloss 20-30%/RAL9005/Door: Mirror											
			PRO REV.	DATE	ALTERATION					AUTH.			
			Linear	>0-3	>3-6	>6-30	>30-120	>120-400	>400-1000	>1000-2000	>2000-4000	>4000-8000	Angle Tolerance
			→	±0.15	±0.2	±0.5	±0.8	±1.2	±2	±3	±4	±5	±1°
			Flatness	>0-10	>10-30	>30-100	>100-300	>300-1000	>1000-3000				
			→	0.1	0.2	0.4	0.8	1.2	1.6				
			NOTE: All dimensions in mm (unless noted otherwise)					W =13.96 (Kg)		Sheet 2 of 3			3rd Angle Projection



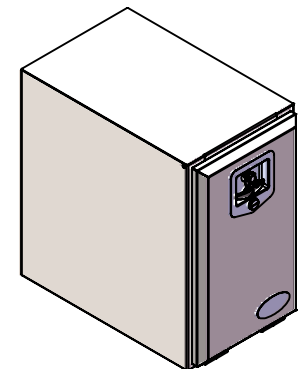
DETAIL AI



DETAIL BG



DETAIL BK



MO:	Batch:	Product Description: Beveled Lid Steel Tool Box with S/Steel Door L300xH500xD500	0	21-8-2023	As per client's order request					V1902
Quantity Batch:		Product Code: 001-001-0113NZ								
Contract #:		Dwg Description: DETAIL DRAWING								
Contract Ref:		Client: Reid & Twiname	Client Code: TBA							
Approved By:	Date:	Client Dwg Ref: Reid & Twiname	Client Rev: 0							
Signature By:	Date:	Product Finish: Body: Black OGF/Smooth/Gloss 20-30%/RAL9005/Door: Mirror								
			NOTE: All dimensions in mm (unless noted otherwise)		W = 13.96 (Kg)		Sheet 3 of 3			3rd Angle Projection