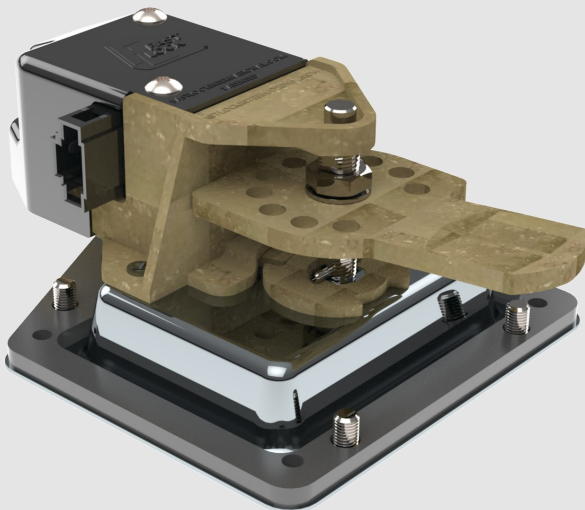
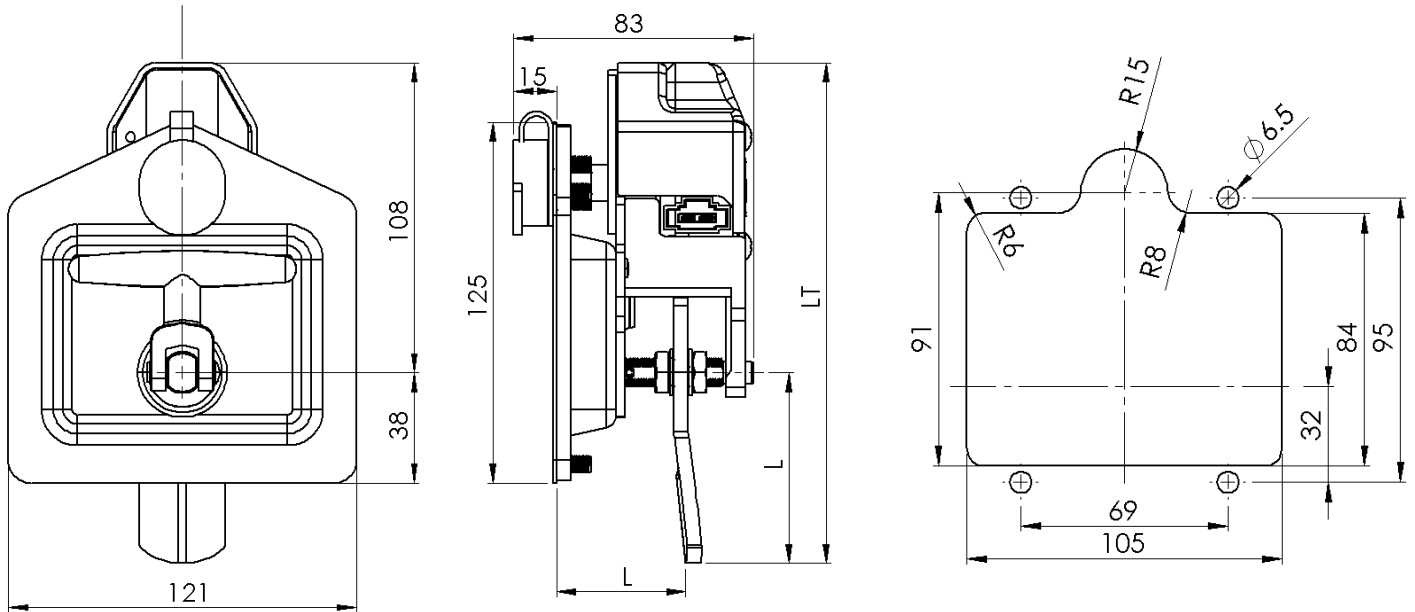


# FAST LOCK

FIRST CHOICE IN REMOTE T-HANDLE LOCKING SYSTEMS



- IP65 Certified
- Electric motor actuator 12 or 24 volts
- Integrated design
- Quick installation without dismantling the lock
- Can lock and unlock using a key
- Compact and durable
- Plug-and-play
- Plugs are compatible with most after market central locking systems
- Assembled and tested in Australia

**Model Name:** FAST LOCK V2

**Exterior Color:** Silver + black

**Weight:** 900g

**Opening Rotation:** 90° clockwise

**Electrical Rating:** 4.1A/12V  
2A/24V

**Protection Level:** IP65

**Operation Temperature:** -40°C to +80°C

**Electric Mechanical life:** >30 000 cycles

**Maximum panel thickness:** 4mm

**Warranty:** 24 months

## FAST LOCK

ID	Voltage	Cam	H =	L =	LT
FL-124 -1	12V	Straight	35-44	66	174
FL-124	12V	Bent with offset of 25mm	45-54	78	186
FL-244-1	12-24V	Straight	35-44	66	174
FL-244	12-24V	Bent with offset of 25mm	45-54	78	186

Locks are keyed alike. Different key codes are available.

Please note that FAST LOCK reserves the right to alter designs and dimensions without notice, McNaughtans Pty Ltd

PATENTED

# FAST LOCK

FIRST CHOICE IN REMOTE T-HANDLE LOCKING SYSTEMS



## What is Fast Lock?

Fast Lock is a twist lock with an integrated electrically controlled lock/unlock system that can be made to function with the existing vehicle remote central locking system or with an independent central locking module.

Fast Lock Locking System is unique and internationally patented. The technology has been tried, tested, and proven as a device that will give peace of mind.

## Why Buy Fast Lock?

The Fast Lock design is very compact and can be fitted without disassembling which makes it quick and easy to fit.

## Highlights

- IP65 Certified. Rain, dust and dirt-proof
- Electric motor actuator available in 12 or 24volts
- Integrated design
- Quick installation without dismantling the lock
- Can lock and unlock using a key
- Compact and durable
- Plug-and-play
- Plugs are compatible with most aftermarket central locking systems
- Assembled and tested in Australia



## Where is Fast Lock used?

Trades or Works vehicles, Trucks, Trailers, Campers, Leisure vehicles where multiple compartments for storage are used. In most cases, these vehicles have multiple doors inclusive of canopies on tray backs as used by Carpenters, Builders, Electricians, Handymen, Government departments, and many other work and leisure uses.

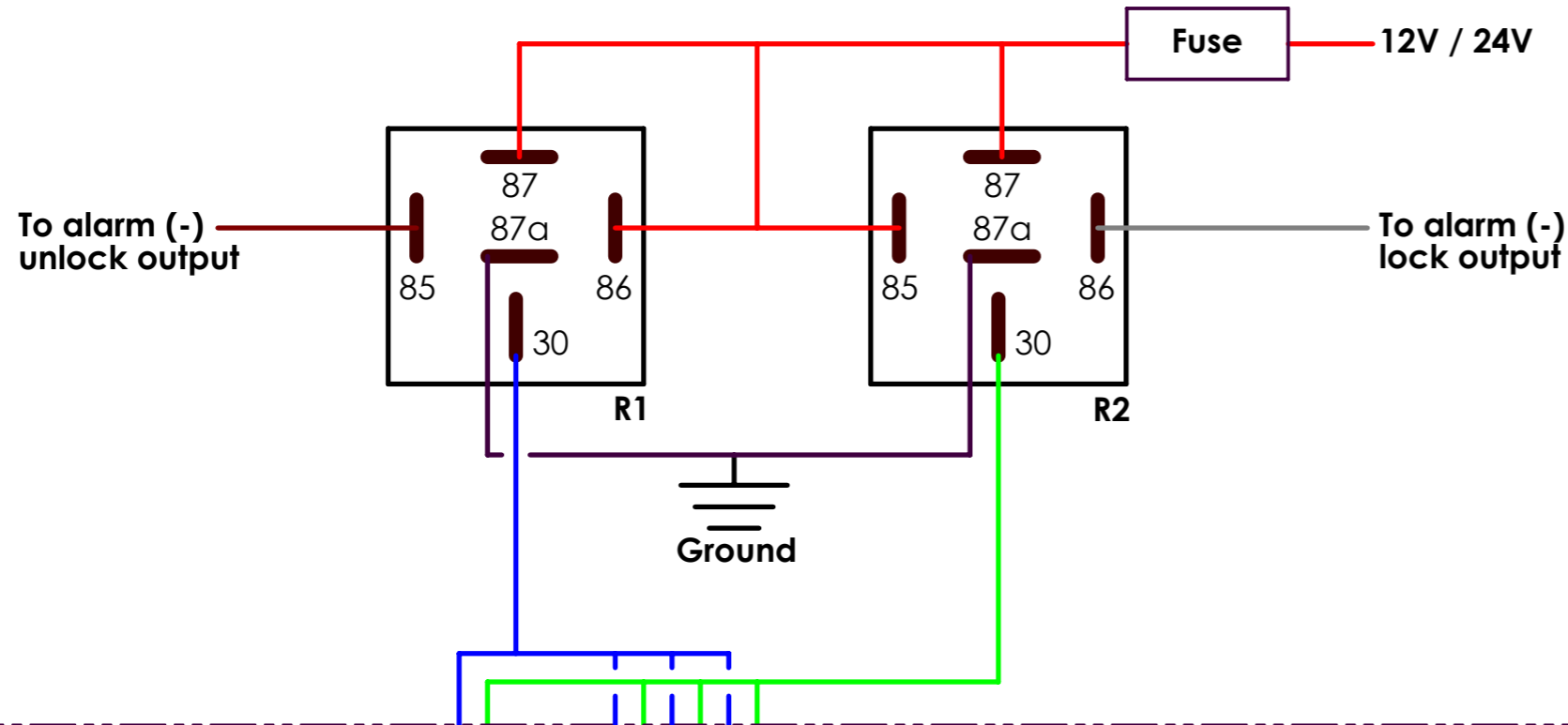
## What are the Benefits?

A busy works schedule and demanding timetable as well as the pressures of getting from job to job can potentially mean that we do not have the time to go around and manually lock each cabin door or compartment. The result can potentially mean thousands of dollars' worth of valuable equipment or stock being stolen if cabin doors and compartments are not locked. Fast Lock helps ensure that the risk of these instances occurring is reduced.

## Fitting Fast lock

The Fast Lock Locking system is simple and easy to install. Fitting can be performed by a competent do it yourself professional, or by a qualified professional. The Fast Lock Locking System is available as a complete remote-controlled locking system or simply as a standard lock without a remote function.

In vehicle cabin



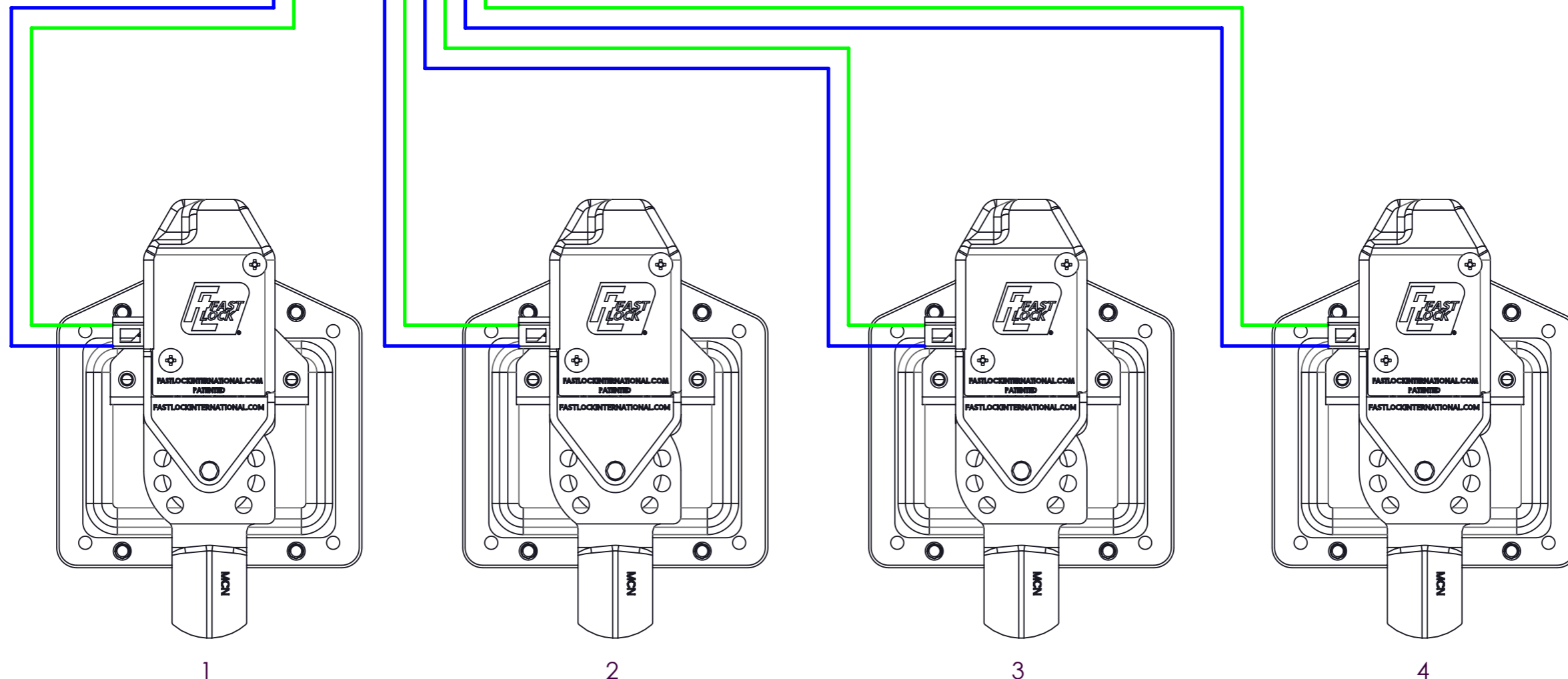
## SCHEMATIC FOR FASTLOCK V2

### NEGATIVE TRIGGER VEHICLE SWITCH SENDS A GROUND SIGNAL TO CONTROLLER TO MOVE THE ACTUATORS

Attention: FastLock series FL-124 is rated for 12 volts only.  
Series FL-244 is rated for 12 - 24 volts

#### Key:

- R1 = relay 1
- R2 = relay 2
- 85 = relay coil - switching or control output
- 86 = relay coil - switching or control output
- 87 = relay power circuit output NO (Normally Open)
- 87a = relay power circuit output NC (Normally Closed)
- 30 = relay power circuit input

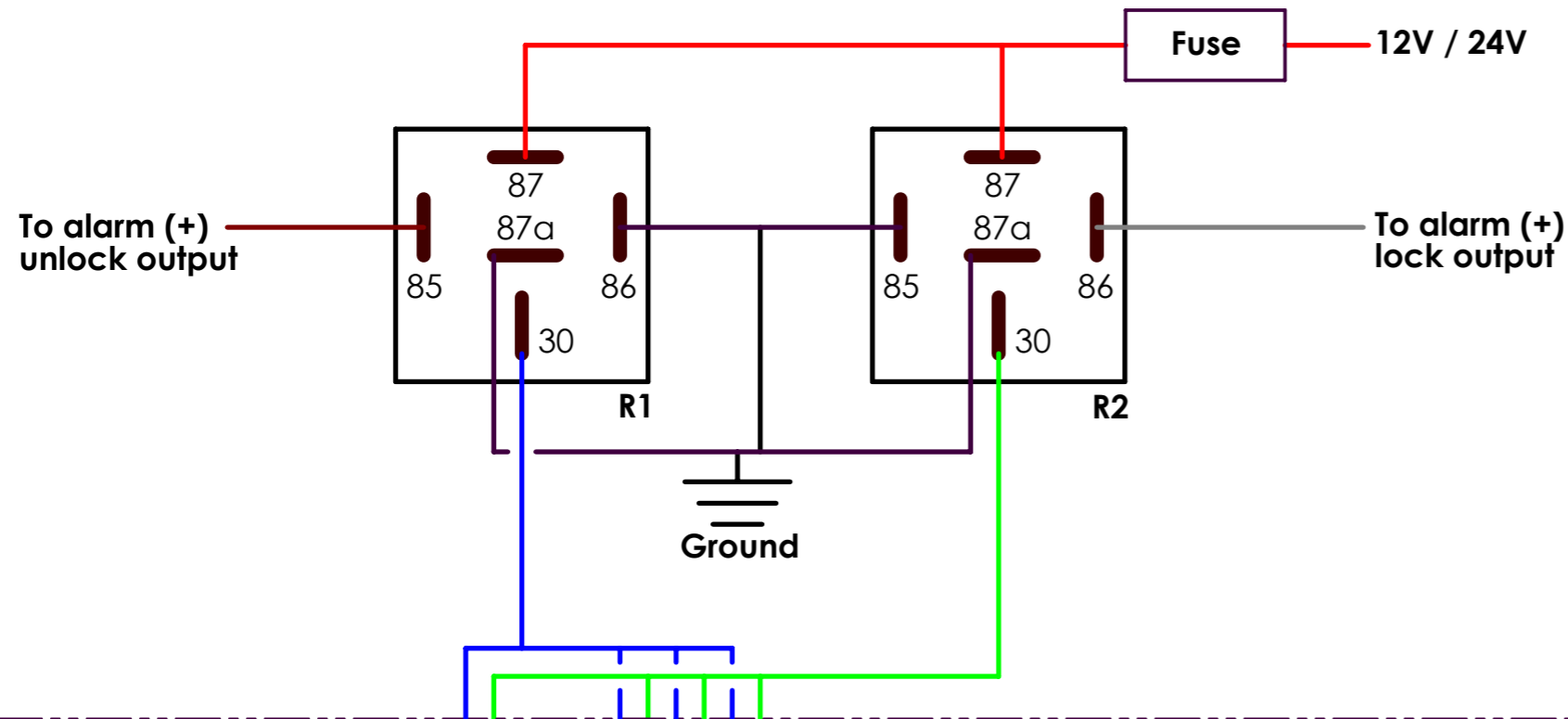


#### FASTLOCK Wiring

Unlock polarity  
Blue wire (+)  
Green wire (-)

Lock Polarity  
Blue wire (-)  
Green wire (+)

In vehicle cabin



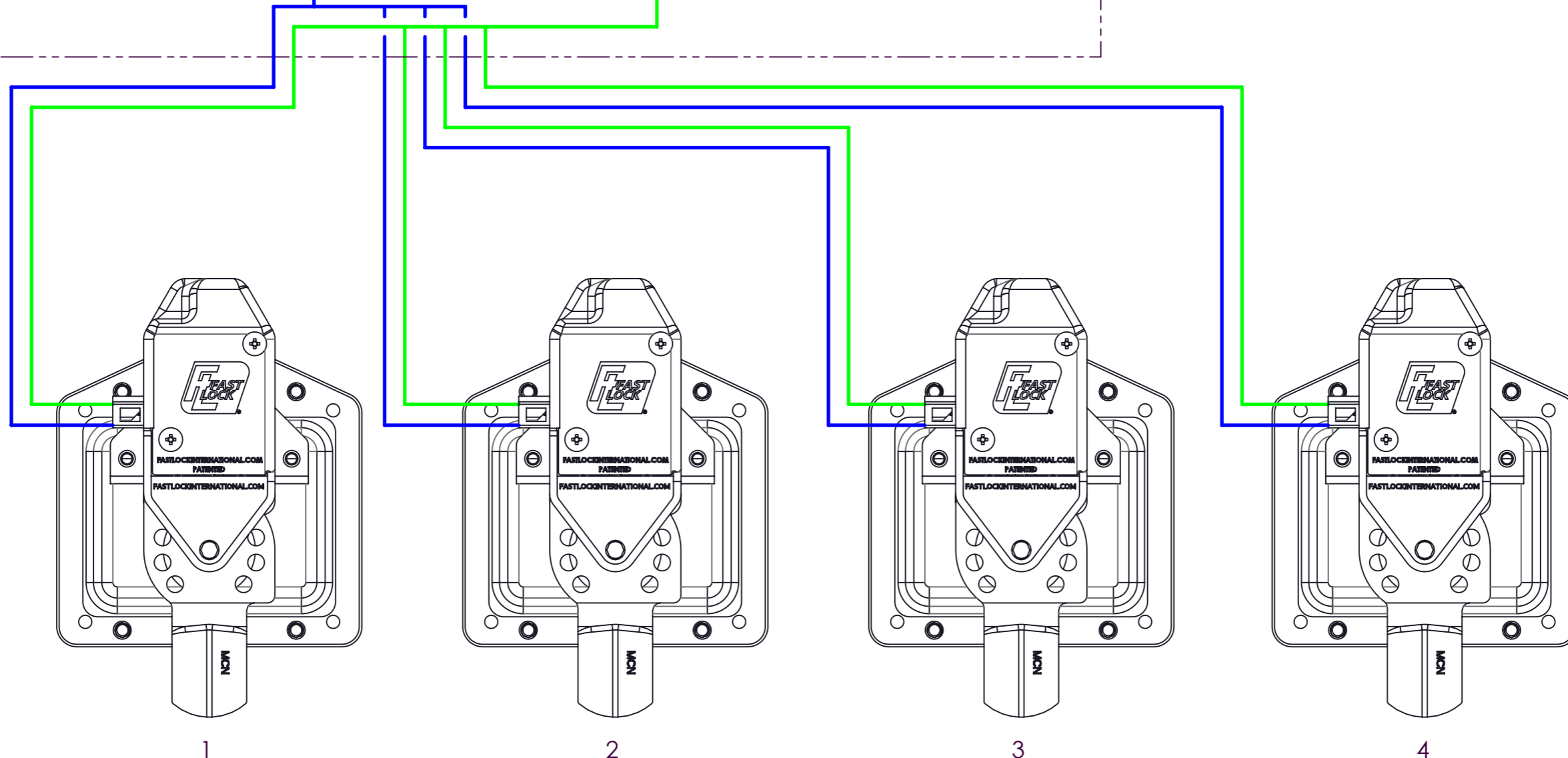
## SCHEMATIC FOR FASTLOCK V2

**POSITIVE TRIGGER**  
VEHICLE SWITCH SENDS A POSITIVE SIGNAL TO CONTROLLER TO MOVE THE ACTUATORS

Attention: FastLock series FL-124 is rated for 12 volts only. Series FL-244 is rated for 12 - 24 volts

**Key:**

- R1 = relay 1
- R2 = relay 2
- 85 = relay coil - switching or control output
- 86 = relay coil - switching or control output
- 87 = relay power circuit output NO (Normally Open)
- 87a = relay power circuit output NC (Normally Closed)
- 30 = relay power circuit input

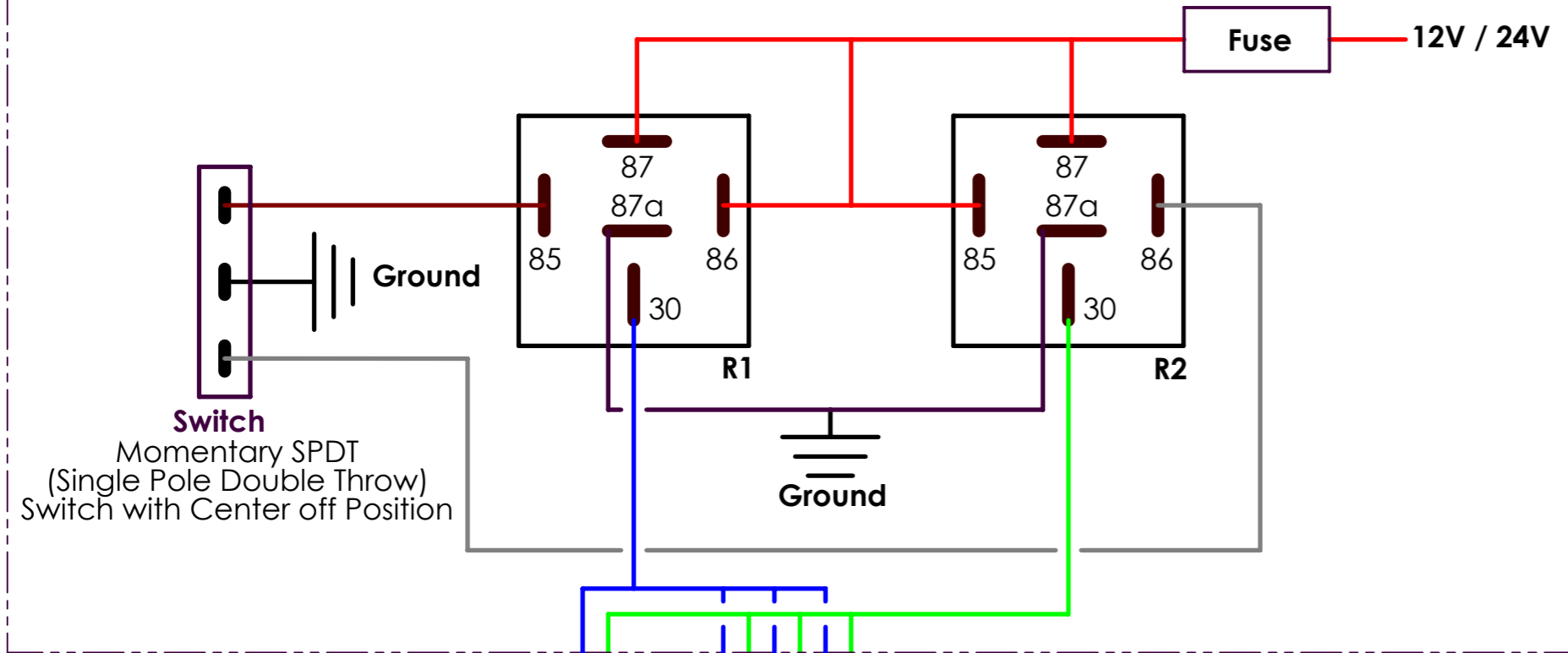


**FASTLOCK Wiring**

Unlock polarity  
Blue wire (+)  
Green wire (-)

Lock Polarity  
Blue wire (-)  
Green wire (+)

In vehicle cabin



## SCHEMATIC FOR FASTLOCK V2

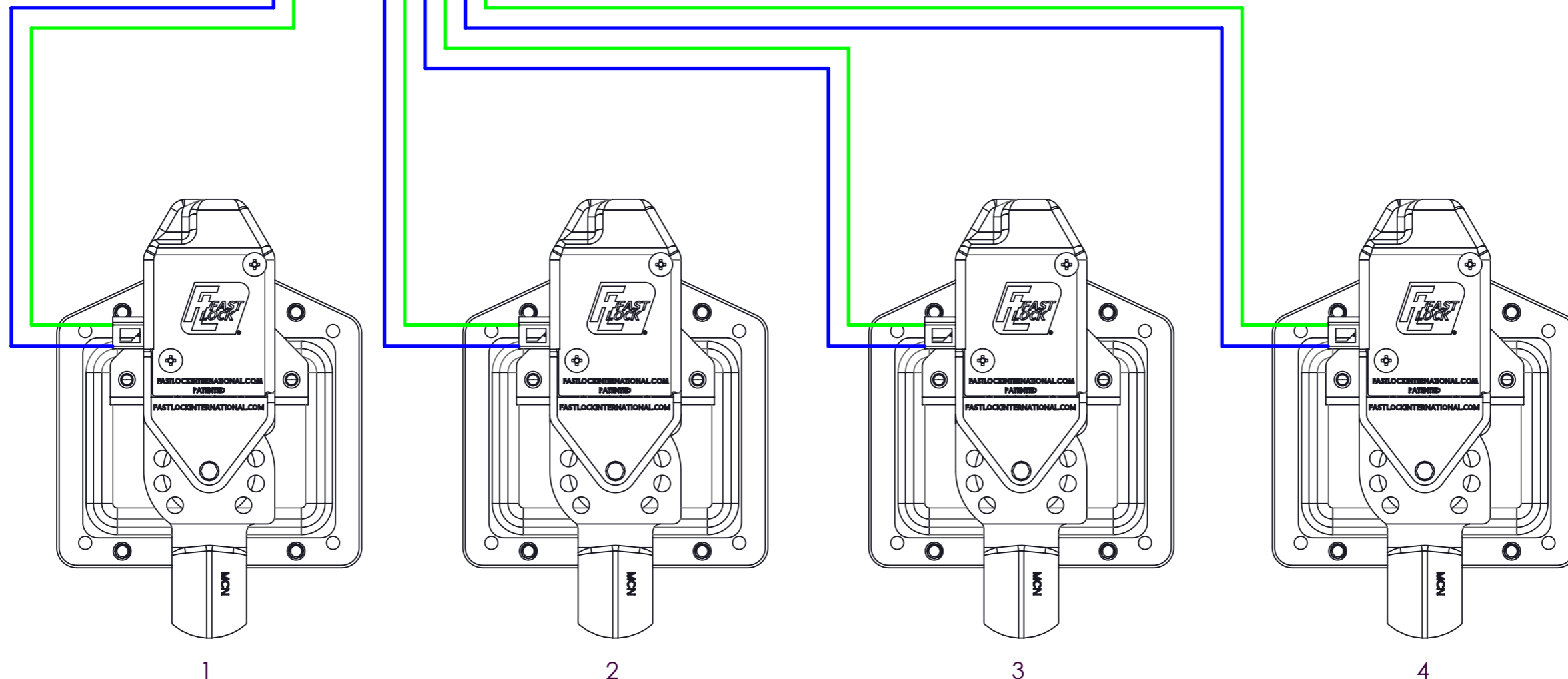
### SWITCH ACTIVATION

VEHICLE SWITCH SENDS A POSITIVE SIGNAL TO CONTROLLER TO MOVE THE ACTUATORS

Attention: FastLock series FL-124 is rated for 12 volts only. Series FL-244 is rated for 12 - 24 volts

#### Key:

- R1 = relay 1
- R2 = relay 2
- 85 = relay coil - switching or control output
- 86 = relay coil - switching or control output
- 87 = relay power circuit output NO (Normally Open)
- 87a = relay power circuit output NC (Normally Closed)
- 30 = relay power circuit input



#### FASTLOCK Wiring

Unlock polarity  
Blue wire (+)  
Green wire (-)

Lock Polarity  
Blue wire (-)  
Green wire (+)