

CAD DRAWING DO NOT MODIFY

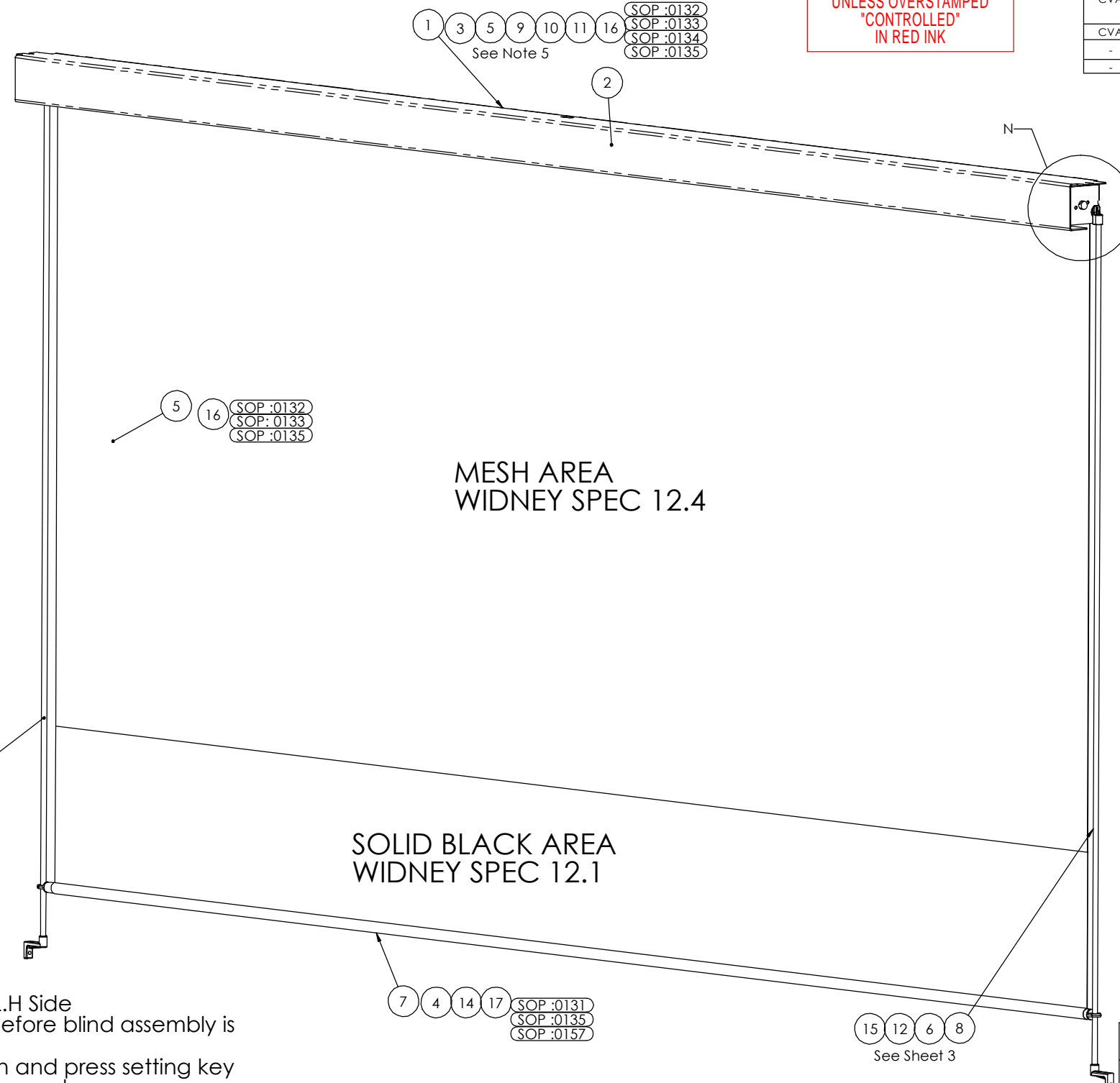
REMOVE ALL SHARP CORNERS/EDGES

DO NOT SCALE DRAWING

UNCONTROLLED COPY
NOT FOR PRODUCTION
UNLESS OVERSTAMPED
"CONTROLLED"
IN RED INK

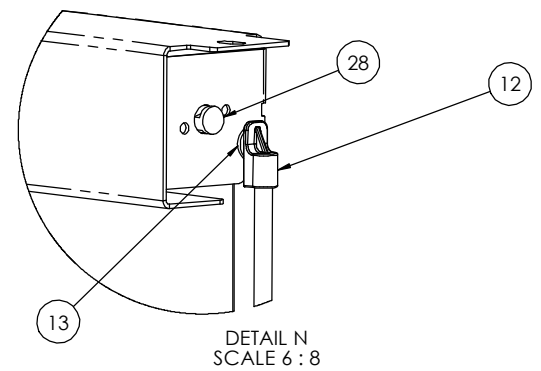
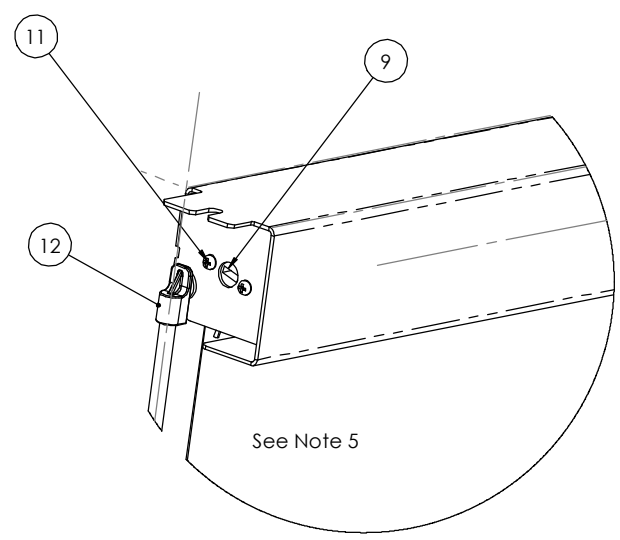
BY	DATE	ALTERATIONS	ISSUE
CVA	14/09/2021	CLOTH SPLIT CHANGED MESH NOW AT TOP SOLID BLACK AT BOTTOM. CUT SIZE OF MESH 12.4 NOW 1931 X 944 CUT SIZE OF SOLID BLACK 12.1 NOW 1931 X 250.0 DM21-102.	2
CVA	04/11/2019	INITIAL RELEASE.	1
-	-	-	-

ITEM NO.	Number	DESCRIPTION	QTY.	Units	CUTSIZE	TOL +/-	IMAGE	LOOSE
1	83/66401/01	Fabricated Backstrap	1	EACH	See Sheet 4			
2	83/64427/02	Roller Tube Assembly	1	EACH	See Sheet 3			
3	83/66401/03	Roller Tube - Section No 29/64536	1	EACH	1937.6	+0.00 -0.75		
4	83/66401/04	Guide Tube - Section No 29/50799	1	EACH	1951.3	+0.00 -0.75		
5	83/66401/05	Blind Cloth Widney Spec 12.4 Mesh Widney Spec 12.1 Solid Black	1	EACH	1931 x 944 1931 x 250	+/-1.0		
6	83/66401/06	Guide Bar - Dia6.35 Aluminium Rod	2	EACH	1057.5			
7	83/66401/07	Lower Guide Tube Assembly	1	EACH	See Sheet 3			
8	83/66401/08	GUIDE BAR ASSY	2	EACH	See Sheet 3			Supply Loose
9	83/64537	24V Electric Motor Assembly	1	EACH				
10	83/64538	End Moulding Assembly	1	EACH				
11	502/001/001	3.5 x 8 Plas Tech Screw	2	EACH				
12	83/57450/01	Upper Guide Bar Retainer	2	EACH				
13	21/54515	RUBBER WASHER	2	EACH				
14	83/49803/1	GUIDE	2	EACH				
15	83/49819/1	Kit Bag 15	2	EACH				Supply Loose
16	705/000/011	Tesa Tape	2	EACH	1937.6	+/-1.0		
17	29/47187	Sealing Rubber	1	EACH	1913	+/-1.0		



Notes -

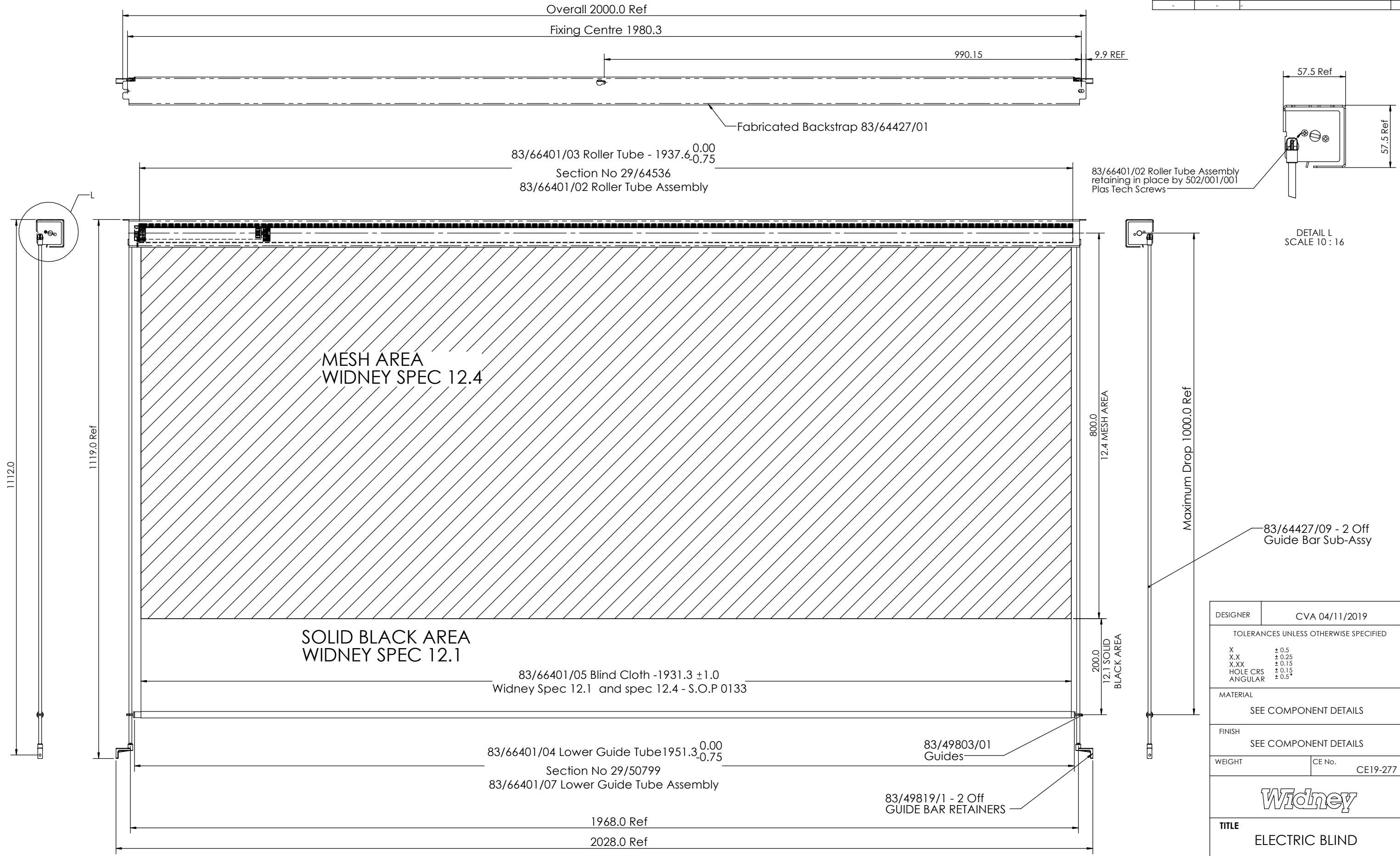
1. Electric Motor fitted to L.H Side
2. Motor Travel to be set before blind assembly is dispatched as follows -
 - Hold up or down and press setting key on motor for 6 seconds
 - Motor will beep "Di, Di, Di"
 - Drive the motor/blind to the required up position and stop
 - Press up once briefly
 - Motor locks into up position (Can feel motor lock)
 - Drive motor/blind to required lower position - Stop at required position
 - Press down once briefly
 - Motor locks into down position (Can feel motor lock)
 - Press "up" briefly - Motor will beep "Di"
 - Postions are now set



DESIGNER	CVA 04/11/2019
TOLERANCES UNLESS OTHERWISE SPECIFIED	
X	± 0.5
X.X	± 0.25
X.XX	± 0.15
HOLE CRS	± 0.15
ANGULAR	± 0.5°
MATERIAL	SEE COMPONENT DETAILS
FINISH	SEE COMPONENT DETAILS
WEIGHT	CE No. CE19-277
Widney	
TITLE	ELECTRIC BLIND
PART No	83/66401
SHT 1 OF 5	ISSUE 2

UNCONTROLLED COPY
NOT FOR PRODUCTION
UNLESS OVERSTAMPED
"CONTROLLED"
IN RED INK

BY	DATE	ALTERATIONS	ISSUE
CVA	14/09/2021	CLOTH SPLIT CHANGED MESH NOW AT TOP SOLID BLACK AT BOTTOM. CUT SIZE OF MESH 12.4 NOW 1931 X 944 CUT SIZE OF SOLID BLACK 12.1 NOW 1931 X 250.0 DM21-102	2
CVA	04/11/2019	INITIAL RELEASE.	1
-	-	-	-
-	-	-	-



DESIGNER	CVA 04/11/2019
TOLERANCES UNLESS OTHERWISE SPECIFIED	
X	± 0.5
X.X	± 0.25
X.XX	± 0.15
HOLE CRS	± 0.15
ANGULAR	± 0.5°
MATERIAL	SEE COMPONENT DETAILS
FINISH	SEE COMPONENT DETAILS
WEIGHT	CE No. CE19-277
Widney	
TITLE	ELECTRIC BLIND
PART No	83/66401

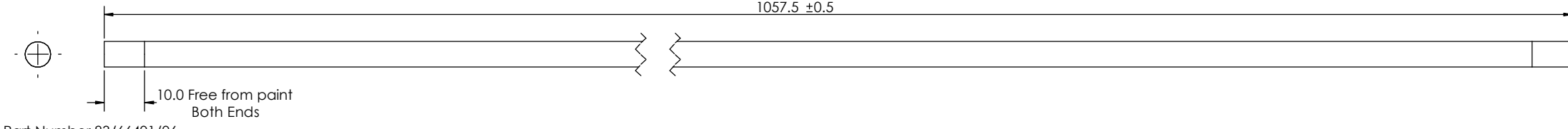
CAD DRAWING DO NOT MODIFY

REMOVE ALL SHARP CORNERS/EDGES

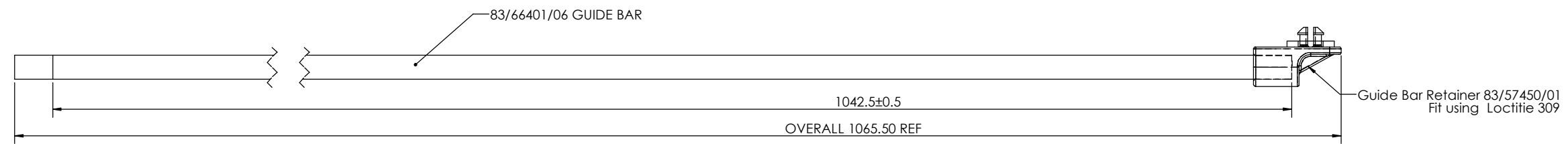
DO NOT SCALE DRAWING

UNCONTROLLED COPY
NOT FOR PRODUCTION
UNLESS OVERSTAMPED
"CONTROLLED"
IN RED INK

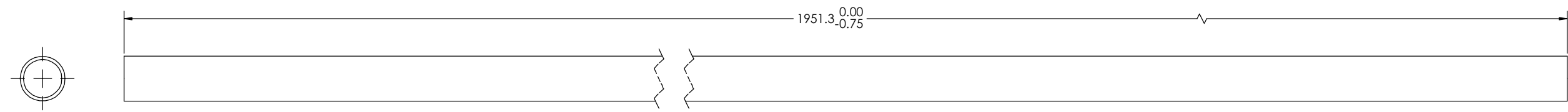
BY	DATE	ALTERATIONS	ISSUE
CVA	14/09/2021	CLOTH SPLIT CHANGED MESH NOW AT TOP SOLID BLACK AT BOTTOM. CUT SIZE OF MESH 12.4 NOW 1931 X 944 CUT SIZE OF SOLID BLACK 12.1 NOW 1931 X 250.0 DM21-102	2
CVA	04/11/2019	INITIAL RELEASE.	1
-	-	-	-
-	-	-	-



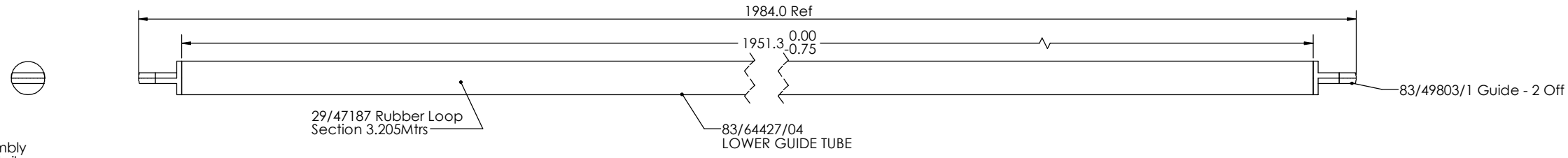
Part Number 83/66401/06
 Description : Guide Bar - Dia6.35 Alumniium Rod
 Material: Aluminium Bar Dia 6.35
 Finish: Black Powder Coat Widney Spec 6.02



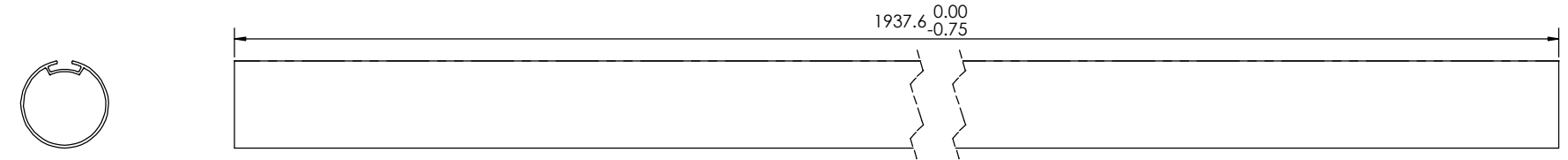
Part Number 83/64427/08
 Description : GUIDE BAR ASSY
 Material: SEE NOTES
 Finish:



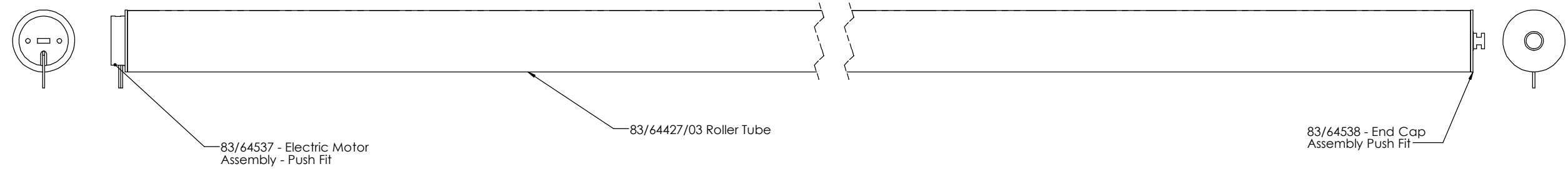
Part Number 83/66401/04
 Description : Guide Tube - Section No 29/50799
 Material: 29/50799
 Finish: Black Powder Coat Widney Spec 6.02



Part Number 83/66401/07
 Description : Guide Tube Assembly
 Material: See Component Details
 Finish: See Component Details



Part Number 83/66401/03
 Description : Roller Tube - Section No 29/64536
 Material: 29/64536/2000
 Finish: Self Colour



Part Number 83/66401/02
 Description : Roller Tube Assembly
 Material: See Component Details
 Finish: See Component Details

DESIGNER	CVA 04/11/2019
TOLERANCES UNLESS OTHERWISE SPECIFIED	
X	±0.5
X.X	±0.25
X.XX	±0.15
HOLE CRS	±0.15
ANGULAR	±0.5°
MATERIAL	SEE COMPONENT DETAILS
FINISH	SEE COMPONENT DETAILS
WEIGHT	CE No. CE19-277
Widney	
TITLE	SUB ASSEMBLIES
PART No	83/66401

A1 THIRD ANGLE PROJECTION

DIMENSIONS ARE IN MILLIMETRES UNLESS OTHERWISE STATED

METRIC SCREW THREADS SHALL CONFORM TO THE LIMITS AND TOLERANCES SPECIFIED IN THE CURRENT BS3643 PT2 CLASS 6g EXTERNAL OR 6H INTERNAL

© WIDNEY MANUFACTURING LTD THIS DOCUMENT IS CONFIDENTIAL AND THE DOCUMENT AND THE COPYRIGHT THEREIN ARE THE PROPERTY OF WIDNEY MANUFACTURING LTD. THE DOCUMENT AND ANY INFORMATION THEREIN MAY NOT BE USED COPIED OR DISCLOSED TO ANY THIRD PARTY WITHOUT THE PRIOR WRITTEN AUTHORISATION OF WIDNEY MANUFACTURING LTD

SHT 3 OF 5
ISSUE 2

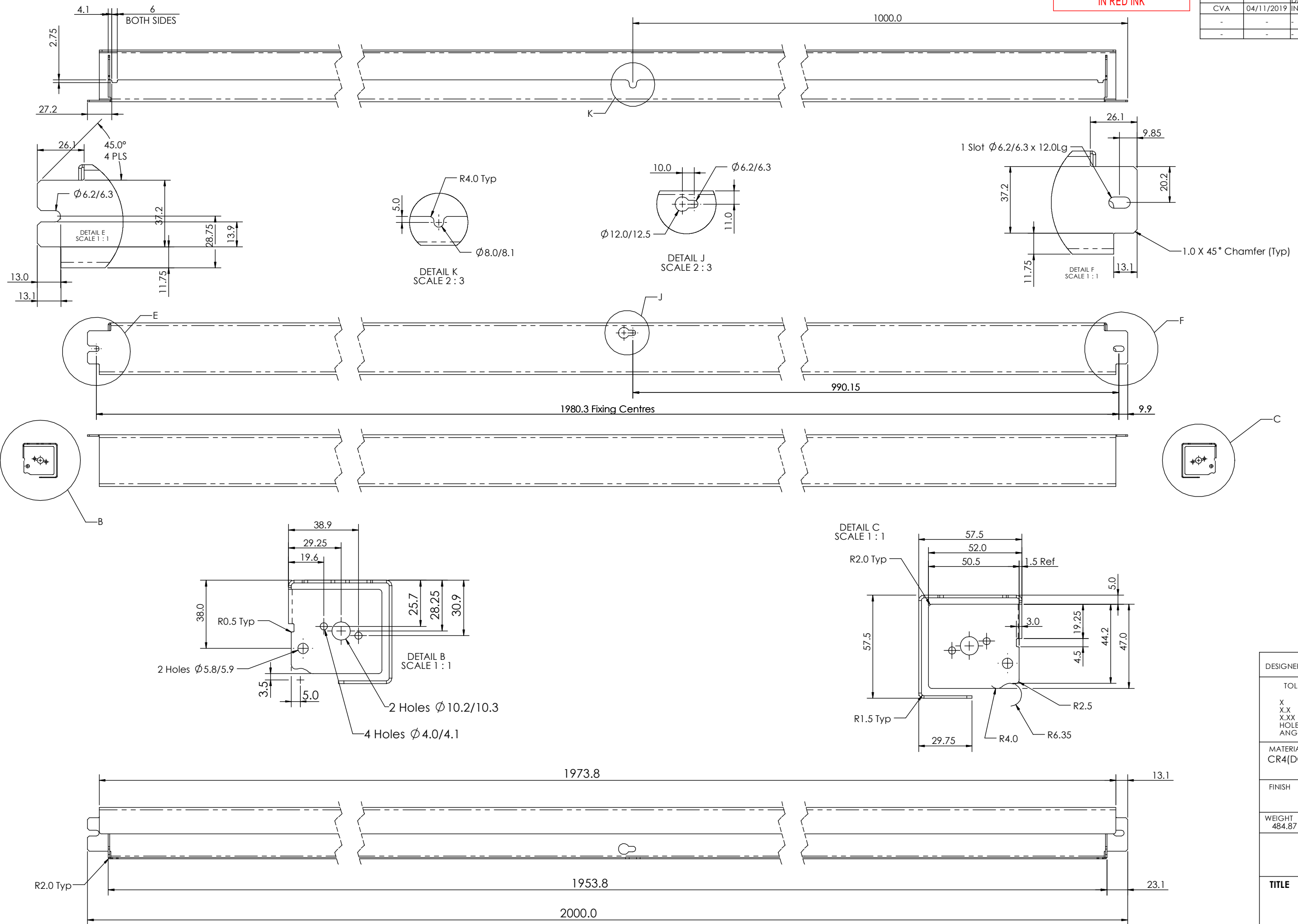
CAD DRAWING DO NOT MODIFY

REMOVE ALL SHARP CORNERS/EDGES

DO NOT SCALE DRAWING

UNCONTROLLED COPY
NOT FOR PRODUCTION
UNLESS OVERSTAMPED
"CONTROLLED"
IN RED INK

BY	DATE	ALTERATIONS	ISSUE
CVA	14/09/2021	CLOTH SPLIT CHANGED MESH NOW AT TOP SOLID BLACK AT BOTTOM. CUT SIZE OF MESH 12.4 NOW 1931 X 944 CUT SIZE OF SOLID BLACK 12.1 NOW 1931 X 250.0 DM21-102	2
CVA	04/11/2019	INITIAL RELEASE.	1
-	-	-	-
-	-	-	-



A1 THIRD ANGLE PROJECTION

DIMENSIONS ARE IN MILLIMETRES UNLESS OTHERWISE STATED

METRIC SCREW THREADS SHALL CONFORM TO THE LIMITS AND TOLERANCES SPECIFIED IN THE CURRENT BS3643 PT2 CLASS 6g EXTERNAL OR 6H INTERNAL

© WIDNEY MANUFACTURING LTD THIS DOCUMENT IS CONFIDENTIAL AND THE DOCUMENT AND THE COPYRIGHT THEREIN ARE THE PROPERTY OF WIDNEY MANUFACTURING LTD. THE DOCUMENT AND ANY INFORMATION THEREIN MAY NOT BE USED COPIED OR DISCLOSED TO ANY THIRD PARTY WITHOUT THE PRIOR WRITTEN AUTHORISATION OF WIDNEY MANUFACTURING LTD

DESIGNER	CVA 04/11/2019
TOLERANCES UNLESS OTHERWISE SPECIFIED	
X	±0.5
X.X	±0.25
X.XX	±0.15
HOLE CRS	±0.15
ANGULAR	±0.5°
MATERIAL	CR4(DC01)BS EN10139 2006 1.5mm sheet Steel
FINISH	Widney Spec 6.02
WEIGHT	484.87
CE No.	CE19-277
Widney	
TITLE	FABRICATED BACKSTRAP
PART No	83/66401
SHT	4 OF 5
ISSUE	2