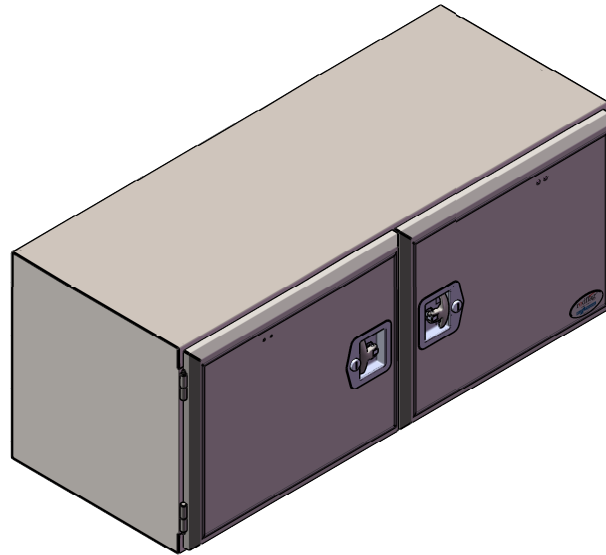


DETAIL AF



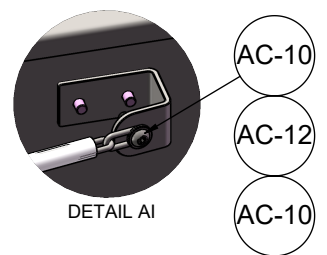
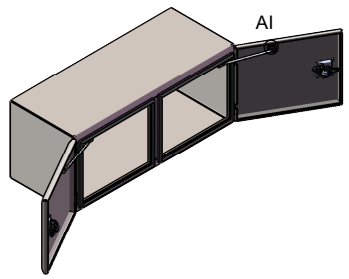
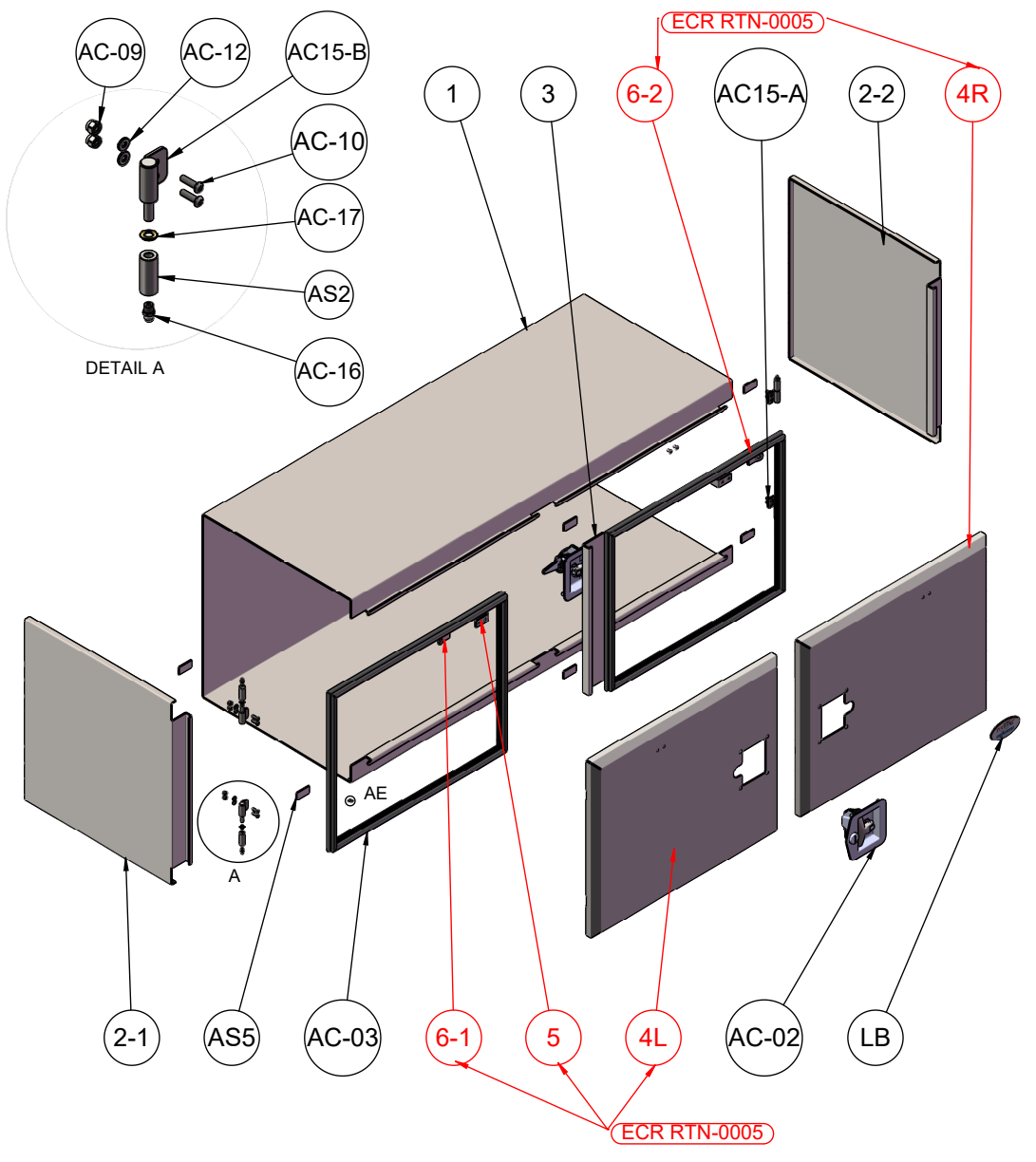
REVISIONS			
PRO REV	DATE	ALTERATION	AUTH
	01-08-2019	AS PER CLIENT'S REQUEST	V1422
0	05-01-2021	As Per Dur 20-0148 [Converting drainage hole drilling to laser cutting]	V2885
	22-06-2021	As Per Dur 20-0069 [Add adhesive info for stainless steel label]	
		As Per Dur 21-0094 [Update the size of the drain hole]	
1	22-06-2021	As Per ECR RTN-0005 [Add the lanyard for Tool box TBPCSSDD1200]	

MO:	Batch: 1 of 1	Product Description: SIDE OPENING STEEL TB WITH S-STEEL DOOR L1200xH500xD500	1	22-06-2021	As Per ECR RTN-0005 [Add the lanyard for Tool box TBPCSSDD1200]	V2885							
Quantity Batch:		Product Code: 001-001-0160NZR1											
Contract #:		Dwg Description: REVISION											
Contract Ref:		Client: RED FLAG/REID & TWINAME	Client Code: TBPCSSDD1200										
Approved By:	Date:	Client Dwg Ref: TBA	Client Rev: 1										
Signature By:	Date:	Product Finish: BODY: Black /Smooth/Matt 25+-5/RAL 9005/ DOOR: Mirror											
			PRO REV.	DATE	ALTERATION	AUTH.							
			Linear	>0-3	>3-6	>6-30	>30-120	>120-400	>400-1000	>1000-2000	>2000-4000	>4000-8000	Angle Tolerance
			→	±0.15	±0.2	±0.5	±0.8	±1.2	±2	±3	±4	±5	±1°
			Flatness	>0-10	>10-30	>30-100	>100-300	>300-1000	>1000-3000				
			→	0.1	0.2	0.4	0.8	1.2	1.6				
			NOTE: All dimensions in mm (unless noted otherwise)				W =37.12 (Kg)	Sheet 1 of 4			3rd Angle Projection		

List of Part							
Part #	Code	Description	Material Spec	Size	Qty.	Unit	Total
1	901-040-0030-1	1.5(+/-0.15)mmT x 1250 x 2500 Hot Rolled Steel Sheet	SPHC JIS G3131	1579.3x1200x1.5mm	1	Sheet	0.6065
2-1	901-040-0030-1	1.5(+/-0.15)mmT x 1250 x 2500 Hot Rolled Steel Sheet	SPHC JIS G3131	546.1x521.1x1.5mm	1	Sheet	0.0911
2-2	901-040-0030-1	1.5(+/-0.15)mmT x 1250 x 2500 Hot Rolled Steel Sheet	SPHC JIS G3131	546.1x521.1x1.5mm	1	Sheet	0.0911
3	901-040-0030-1	1.5(+/-0.15)mmT x 1250 x 2500 Hot Rolled Steel Sheet	SPHC JIS G3131	402x123.1x1.5mm	1	Sheet	0.0158
4L	903-040-0015-2	1.2mm thk Stainless Steel Flat Sheet Cut To Size w/ plastic protection on one side	Grade: 304 Mirror	644.2x536.7x1.2mm	1	Sheet	0.1106
4R	903-040-0015-2	1.2mm thk Stainless Steel Flat Sheet Cut To Size w/ plastic protection on one side	Grade: 304 Mirror	644.2x536.7x1.2mm	1	Sheet	0.1106
5	903-041-0030-1	2(+/-0.17)mmT x 1220 x 2440 S/Steel Flat Sheet	SUS304 JIS G4305	85x20x3 mm	2	Sheet	0.0000
6-1	901-040-0050-1	3(+/-0.21)mmT x 1250 x 2500 Hot Rolled Steel Sheet	SPHC JIS G3131	40x38x3 mm	1	Sheet	0.0000
6-2	901-040-0050-1	3(+/-0.21)mmT x 1250 x 2500 Hot Rolled Steel Sheet	SPHC JIS G3131	40x38x3 mm	1	Sheet	0.0000

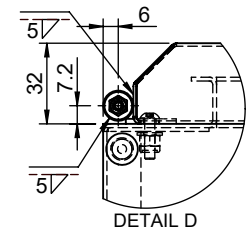
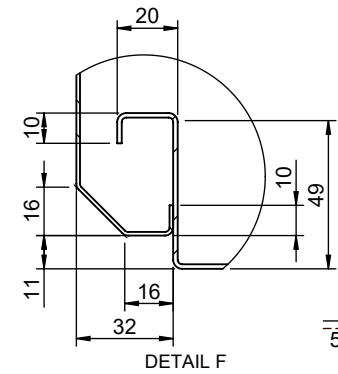
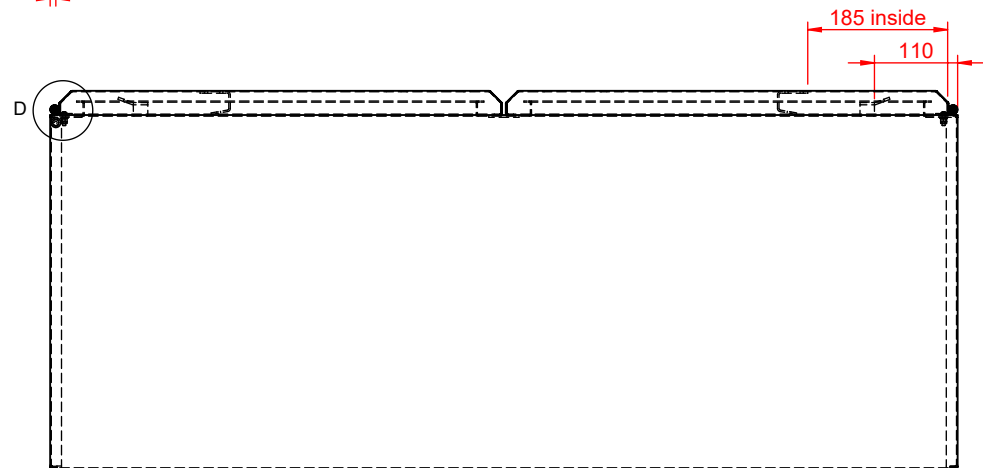
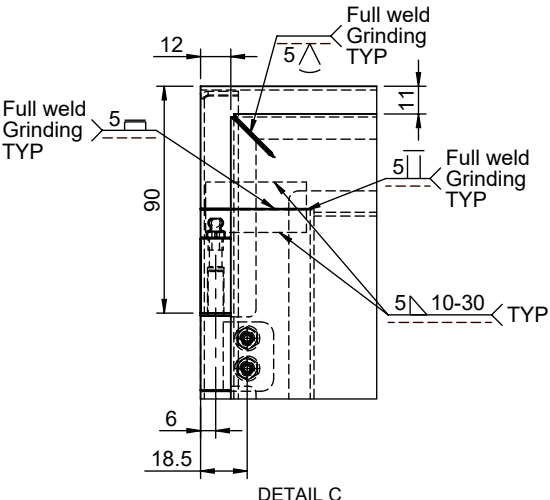
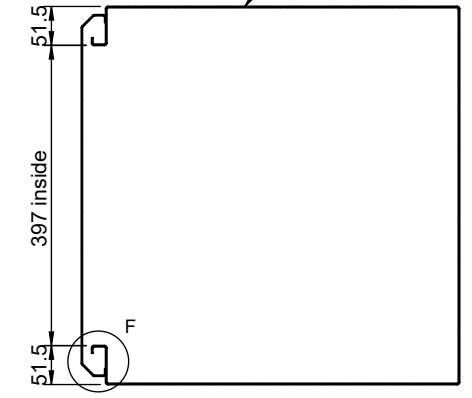
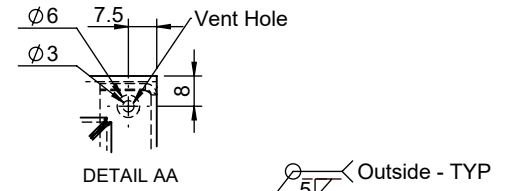
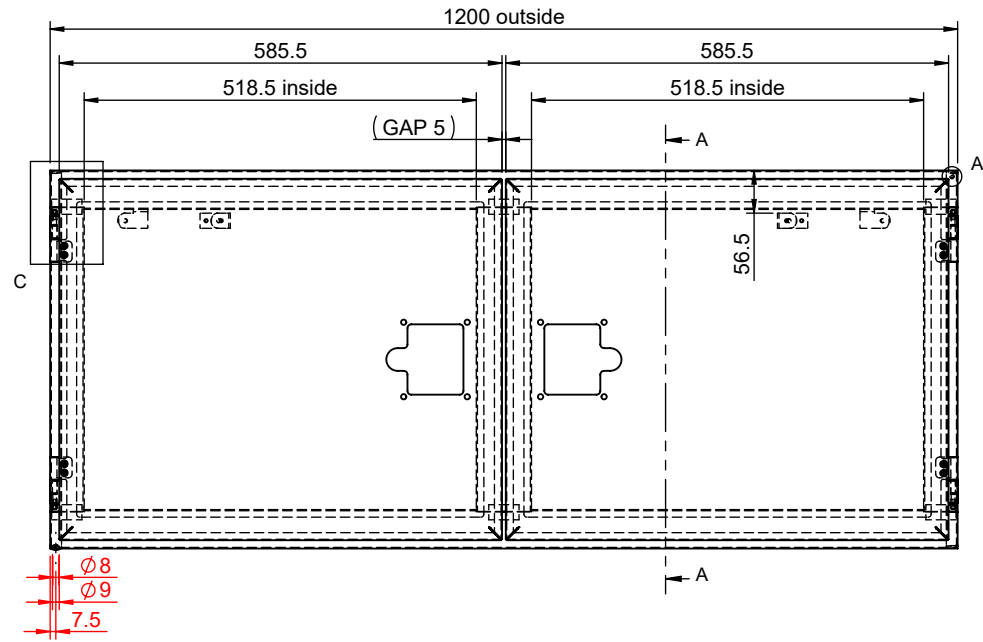
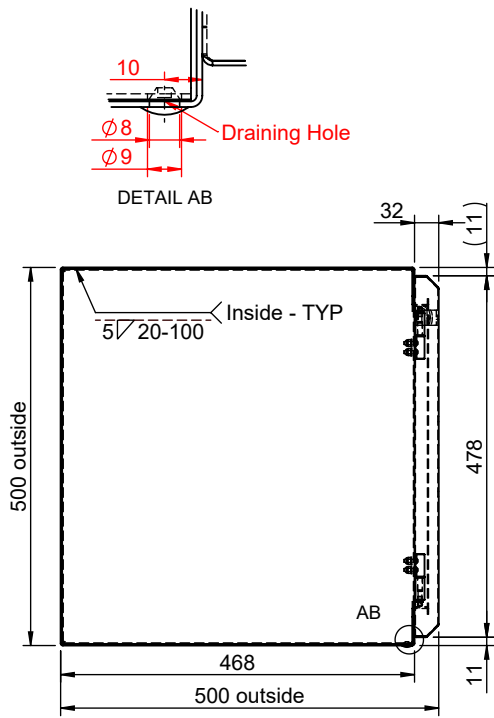
List of Assembly							
AS2	SFP-010-0160	Barrel Hinge Female Part (S-Steel) Weld on	Grade: 304	-	4	Pcs	4
AS5	SFP-010-0050	Tool Box Corner Flange (Steel) 40x20x1.5mm	CT 3 (250 Mpa)	40x20x1.5mm	6	Pcs	6

List of Packing							
AC-01	914-350-2200	S/Steel Rivets Sealed Dome/Truss Head 4 dia x 8mmL (Rive Nut)	S/Steel: 304	-	4	Pcs	4
AC-02	915-006-0002	T-Paddle handle lock "Edge Style" (T-latch 50052) c/w Gasket & Key	Stainless Steel Grade 304	-	2	Pcs	2
AC-03	915-008-0000	Rubber Dust Proof Seal, 8mm dia rubber seal Plastic pinch type (Use Lenght 3020mm)	Rubber	2100mm	2	Pcs	2
AC-06	915-013-0000	Stainless Steel chain 20mm x 8mm x 2mm (Use Lenght 310mm)	Stainless Steel	310 mm	38	Length	38
AC-07	TBA	Seal Button	Plastics	-	1	Pcs	1
AC-08	915-009-0005	8mm dia Black Plastic Heat Shrink (Use Lenght 255mm)	Plastic	255mm	2	Pcs	2
AC-09	914-047-0009	Nyloc Nut : M4 x pitch 0.7 Stainless Steel	S/Steel 304	-	12	Pcs	12
AC-10	914-016-0990	Hex socket (allen Key) & Domed Head bolt M4 x 15mm L x 0.7 pitch	Stainless Steel	-	12	Pcs	12
AC-12	914-098-0004	Stainless steel washer to suit M4 OD 10mm x 1mm	Stainless steel	-	16	Pcs	16
AC-16	915-060-0000	M6 grease nipple	Steel	-	4	Pcs	4
AC-17	914-096-0010	Flat Washer M6 x 6.1mmID x 12mmOD x 1mmT	Brass	-	4	Pcs	4
AC15-A	SFP-010-0156	Barrel Hinge Male Part (Steel) Bolt on LH	Steel	-	2	Pcs	2
AC15-B	SFP-010-0155	Barrel Hinge Male Part (Steel) Bolt on RH	Steel	-	2	Pcs	2
LB	919-100-0050	*RED FLAG Logo with www.retwine.co.nz*-Oval-shaped Label,90mmL x 45mmH	S/Steel 304	-	1	Pcs	1
BOX	920-203-2025	Card board Box L1210 x H510 x D515 *RED FLAG Logo with www.retwine.co.nz*: Tool Box	Girl/Boy: 3ply	L1200xH500xD500	1	Pcs	1

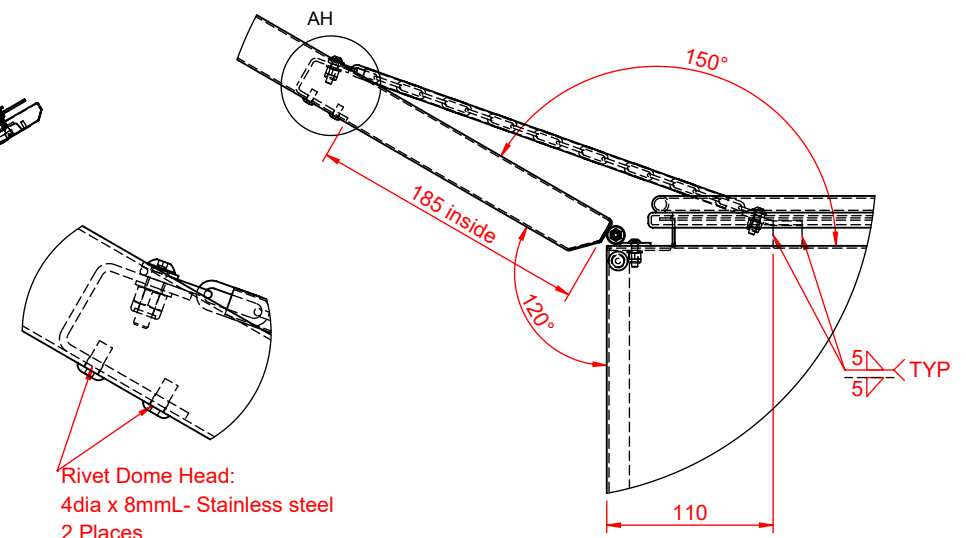
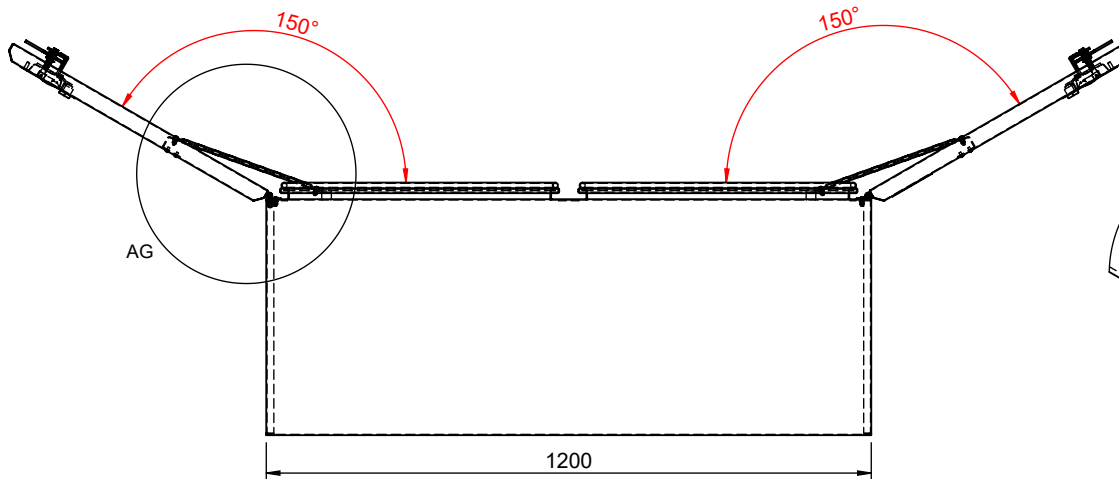
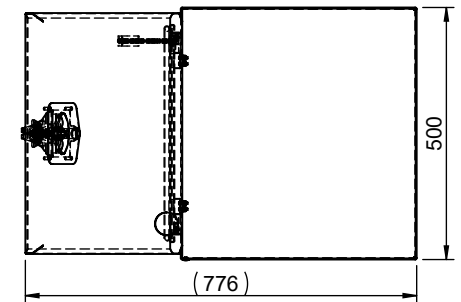
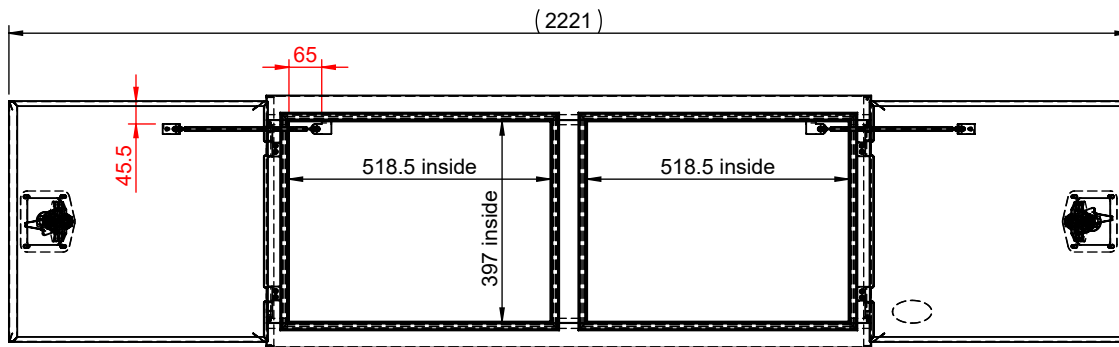


MO:	Batch: 1 of 1	Product Description: SIDE OPENING STEEL TB WITH S-STEEL DOOR L1200xH500xD500
Quantity Batch:		Product Code: 001-001-0160NZR1
Contract #:		Dwg Description: LIST OF MATERIAL
Contract Ref:		Client: RED FLAG/REID & TWINAME Client Code: TBPCSSDD1200
Approved By:	Date:	Client Dwg Ref: TBA Client Rev: 1
Signature By:	Date:	Product Finish: BODY: Black /Smooth/Matt 25+-5/RAL 9005/ DOOR: Mirror

1	22-06-2021	As Per ECR RTN-0005 [Add the lanyard for Tool box TBPCSSDD1200]								V2885
PRO REV.	DATE	ALTERATION								AUTH.
Linear	>0-3	>3-6	>6-30	>30-120	>120-400	>400-1000	>1000-2000	>2000-4000	>4000-8000	Angle Tolerance
→	±0.15	±0.2	±0.5	±0.8	±1.2	±2	±3	±4	±5	±1°
Flatness	>0-10	>10-30	>30-100	>100-300	>300-1000	>1000-3000				
→	0.1	0.2	0.4	0.8	1.2	1.6				
NOTE: All dimensions in mm (unless noted otherwise)						W =37.12 (Kg)	Sheet 2 of 4			3rd Angle Projection



MO:	Batch: 1 of 1	Product Description: SIDE OPENING STEEL TB WITH S-STEEL DOOR L1200xH500xD500	1	22-06-2021	As Per ECR RTN-0005 [Add the lanyard for Tool box TBPCSSDD1200]					V2885			
Quantity Batch:		Product Code: 001-001-0160NZR1	PRO REV.		ALTERATION					AUTH.			
Contract #:		Dwg Description: DETAIL DRAWING 1	Linear	>0-3	>3-6	>6-30	>30-120	>120-400	>400-1000	>1000-2000	>2000-4000	>4000-8000	Angle Tolerance
Contract Ref:		Client: RED FLAG/REID & TWINAME	→	±0.15	±0.2	±0.5	±0.8	±1.2	±2	±3	±4	±5	±1°
Approved By:	Date:	Client Dwg Ref: TBA	Client Code: TBPCSSDD1200	Flatness	>0-10	>10-30	>30-100	>100-300	>300-1000	>1000-3000			
Signature By:	Date:	Product Finish: BODY: Black /Smooth/Matt 25+-5/RAL 9005/ DOOR: Mirror	Client Rev: 1	→	0.1	0.2	0.4	0.8	1.2	1.6			
			NOTE: All dimensions in mm (unless noted otherwise)					W =37.12 (Kg)	Sheet 3 of 4			3rd Angle Projection	



DETAIL AH

DETAIL AG

MO:	Batch: 1 of 1	Product Description: SIDE OPENING STEEL TB WITH S-STEEL DOOR L1200xH500xD500	1	22-06-2021	As Per ECR RTN-0005 [Add the lanyard for Tool box TBPCSSDD1200]					V2885			
Quantity Batch:		Product Code: 001-001-0160NZR1	PRO REV.	DATE	ALTERATION					AUTH.			
Contract #:		Dwg Description: DETAIL DRAWING 2	Linear	>0-3	>3-6	>6-30	>30-120	>120-400	>400-1000	>1000-2000	>2000-4000	>4000-8000	Angle Tolerance
Contract Ref:		Client: RED FLAG/REID & TWINAME	→	±0.15	±0.2	±0.5	±0.8	±1.2	±2	±3	±4	±5	±1°
Approved By:	Date:	Client Dwg Ref: TBA	Client Rev: 1	Flatness	>0-10	>10-30	>30-100	>100-300	>300-1000	>1000-3000			
Signature By:	Date:	Product Finish: BODY: Black /Smooth/Matt 25+-5/RAL 9005/ DOOR: Mirror	NOTE: All dimensions in mm (unless noted otherwise)		W =37.12 (Kg)	Sheet 4 of 4					3rd Angle Projection		