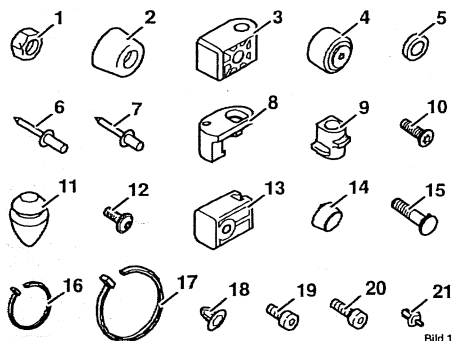


Assembly instructions for seat suspension MSG95EL – Worn parts

Removal – Installation



Overview of components



- | | |
|--|--|
| <p>(1) Micro-encapsulated hexagon nut; M8; (6x) tightening torque: 25 Nm</p> <p>(2) Buffer; (1x)</p> <p>(3) Fixed bearing; (2x)</p> <p>(4) Roller; (6x)</p> <p>(5) Washer; Ø13; (2x)</p> <p>(6) Blind rivet; 4.8 x 11.5; Al-St; (1x)</p> <p>(7) Blind rivet; 5 x 10; St-St; (6x)</p> <p>(8) Buffer; (1x)</p> <p>(9) Socket; (2x)</p> <p>(10) Countersunk screw; inner race; 8 x 20; (1x) tightening torque: 6 Nm</p> <p>(11) Buffer; (2x)</p> <p>(12) Collar screw; inner race; 8 x 22; (2x) tightening torque: 6 Nm</p> | <p>(13) End stop; (2x)</p> <p>(14) Buffer; (2x)</p> <p>(15) Countersunk screw; M8 x 45; (2x)</p> <p>(16) Cable tie; 3.6 x 200; (2x)</p> <p>(17) Cable tie; 7.6 x 387; (2x) tightening torque: 360 N</p> <p>(18) Bellows pin; (23x)</p> <p>(19) Micro-encapsulated cap screw; hexagon socket screw; M8 x 12; (3x); tightening torque: 25 Nm</p> <p>(20) Micro-encapsulated cap screw; hexagon socket screw; M8 x 16; (1x); tightening torque: 25 Nm</p> <p>(21) Expanding rivet; (1x)</p> |
|--|--|

! Safety instructions

- Any conversion or refitting work on GRAMMER AG seats must be performed exclusively in authorized workshops by trained or suitably qualified personnel and in adherence with the applicable operating, maintenance and installation instructions and in compliance with all relevant national regulations.
- Improper installation and assembly bear the risk of bodily injury or property damage and the proper function of the driver's seat or mounted parts can no longer be guaranteed.
- GRAMMER AG disclaims any warranty or liability obligations for any damage resulting from non-compliance with operating, maintenance and installation instructions.
- The description of the repair work refers to the dismounted seat. Depending on the individual installation situation, the repair work may also be performed on the installed seat.
- Prior to any repair work, the seat must be disconnected from the vehicle's electrical system.
- When performing any repair work, the seat suspension is lowered (without air pressure). If it is necessary to bring the seat suspension into a higher position for repair work, secure it by means of suitable spacers at the back between swinging structure and lower suspension part. Otherwise, there is a risk of crushing.
- Before installation, check the possible installation situation by comparing it with the figures provided.

Basic information

Installation of wear parts included in the scope of delivery of spare parts must be performed exclusively in authorized workshops by trained or suitably qualified personnel and in adherence with the applicable repair manual.

! ATTENTION Damage of air hoses (A, B, C, D) when removing the compressor (K) or the additional air supply (Z)!

- Mark the air hoses (A, B, C, D) and cut them off in a straight and clean way directly behind the connections of the additional air supply (Z) or of the compressor (K) by means of a sharp knife.
- It is possible to cut off the defective section in a straight and clean way (about 12 mm) with a sharp knife only once. After cutting off, mark the air hoses (A, B, C, D) in order not to cut them several times.

! ATTENTION Damage of the compressor (K) or of the additional air supply (Z) when removing the hoses (A, B, C, D)!

- Do not lift off the air hoses (A, B, C, D) at the connections of the compressor (K) or of the additional air supply (Z) by means of a screwdriver or similar tools.
- Take care not to damage the connections at the compressor (K) or at the additional air supply (Z) when pulling off the compressed-air hose (A) or the air hoses (B, C, D), otherwise tightness will not be ensured.
- For easier removal, carefully slit the air hoses (A, B, C, D) with a sharp knife.

! ATTENTION Hydrostatic test!

The hydraulic test of the seat should be performed upon installation of the compressor (K), additional air supply (Z), air spring (L) or air hoses (A, B, C, D). To do this, apply 60 kg load to the seat for 24 hours. The lowering within this time must not exceed 15 mm.

Notes

- Replace all existing old parts with enclosed new ones. If there is no new part included, the old one is to be cleaned and checked for its suitability for re-use. Defective parts and worn parts must always be replaced by new ones.
- Mark the points where components are fastened by means of cable ties (16, 17) and remove the cable ties (16, 17).
- Mark the screw positioning diagram when removing the fore/aft adjustment (I).
Installation note: To prevent the cables from being squeezed and rubbed, the cable harness of the upper seat part (G) and the cable of the seat occupancy detection system (H) should be placed in a slackness loop (round arrow) between the fore/aft adjustment (I).
- Reuse a possibly existing end stop (E).

Worn parts – Removal and installation (subject to possible modifications, deviations from the illustrations are possible)

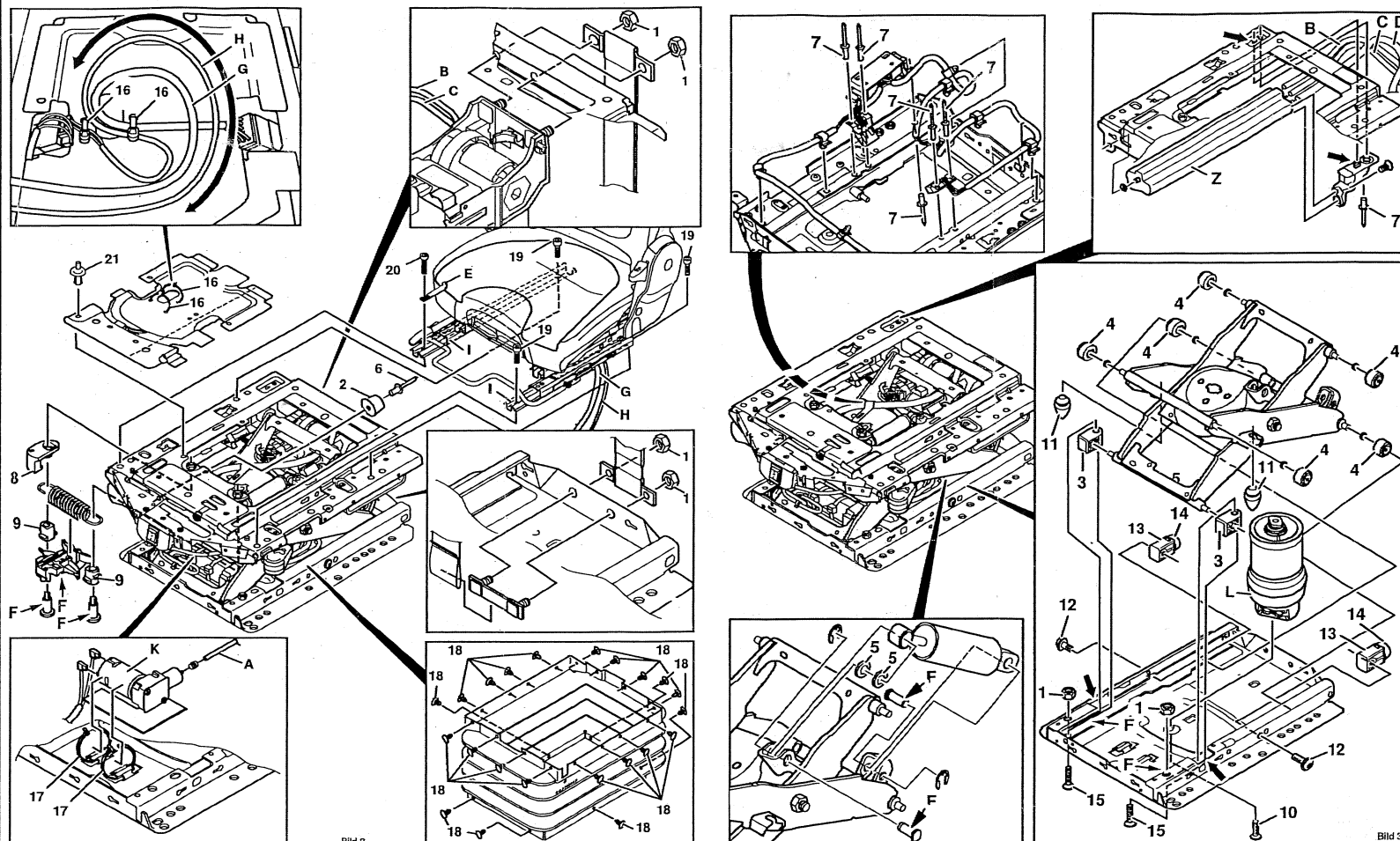


Bild 2

Bild 3