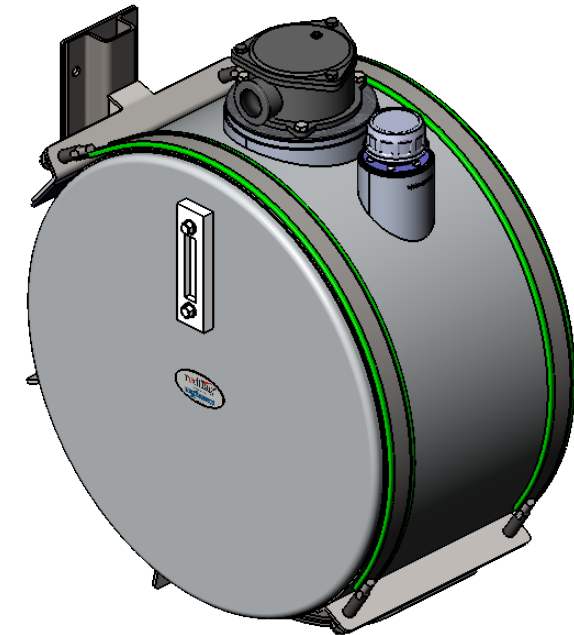
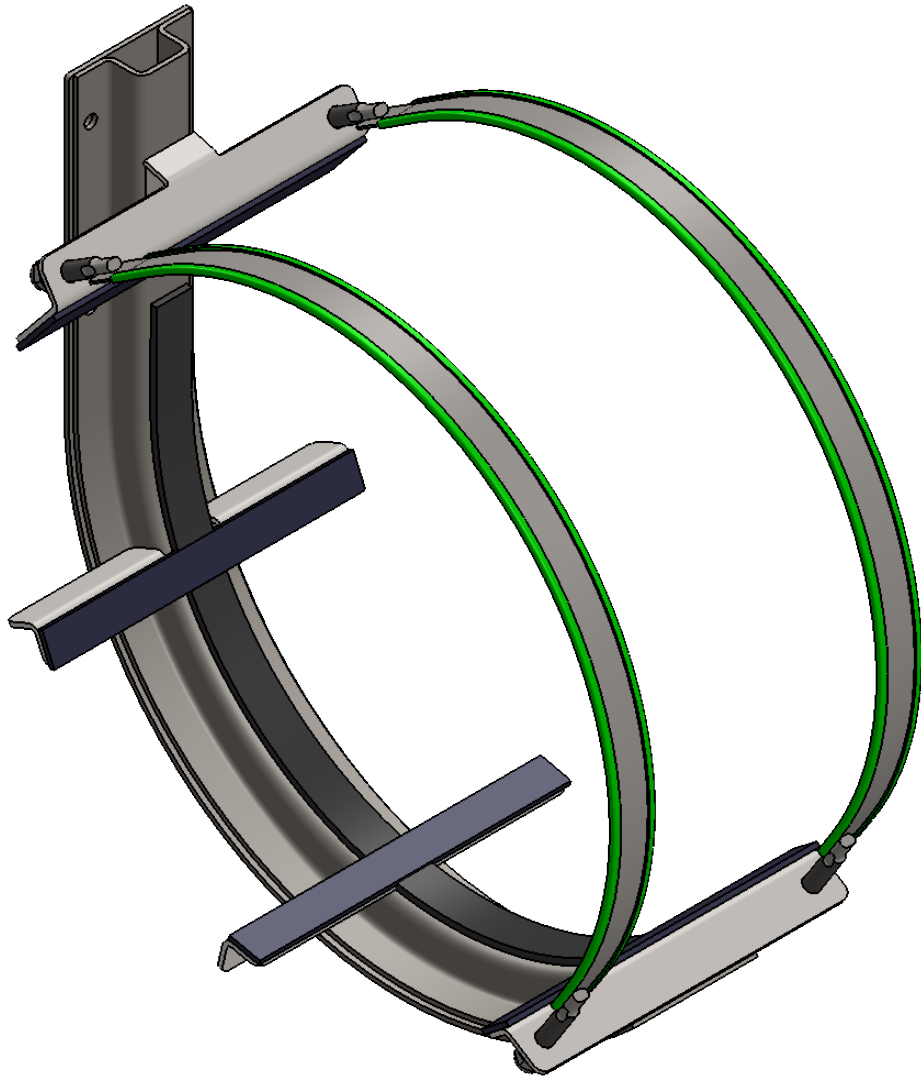


REVISIONS			
PRO REV	DATE	ALTERATION	AUTH
0	25-06-2018	As Per Client's Request	V1422



MO:	Batch:	Product Description: Reid&Twiname Cylinder Hydraulic Oil Tank Bracket 660mm Dia To Suit Aluminium Tank	
Quantity Batch:		Product Code: 001-002-2105NZ	
Contract #:		Dwg Description: REVISIONS TABLE	
Contract Ref:		Client: RED FLAG/REID & TWINAME	Client Code: N/A
Approved By:	Date:	Client Dwg Ref: N/A	Client Rev: 0
Signature By:	Date:	Product Finish: Bracket : Black/Smooth/Matt 25+-5/RAL 9005 Strap : Mirror	

0	25-06-2018	As Per Client's Request								V1422
PRO REV.	DATE	ALTERATION								AUTH.
Selection	0.5-3	>3-6	>6-30	>30-120	>120-400	>400-1000	>1000-2000	>2000-4000	>4000-8000	Angle Tolerance
	±0.05	±0.05	±0.1	±0.15	±0.2	±0.3	±0.5	±0.8	-	±1°
	±0.1	±0.1	±0.2	±0.3	±0.5	±0.8	±1.2	±2	±3	
➔	±0.15	±0.2	±0.5	±0.8	±1.2	±2	±3	±4	±5	
NOTE: All dimensions in mm (unless noted otherwise)						W =22.39 (Kg)		Sheet 1 of 3		First Angle Projection

List of Part

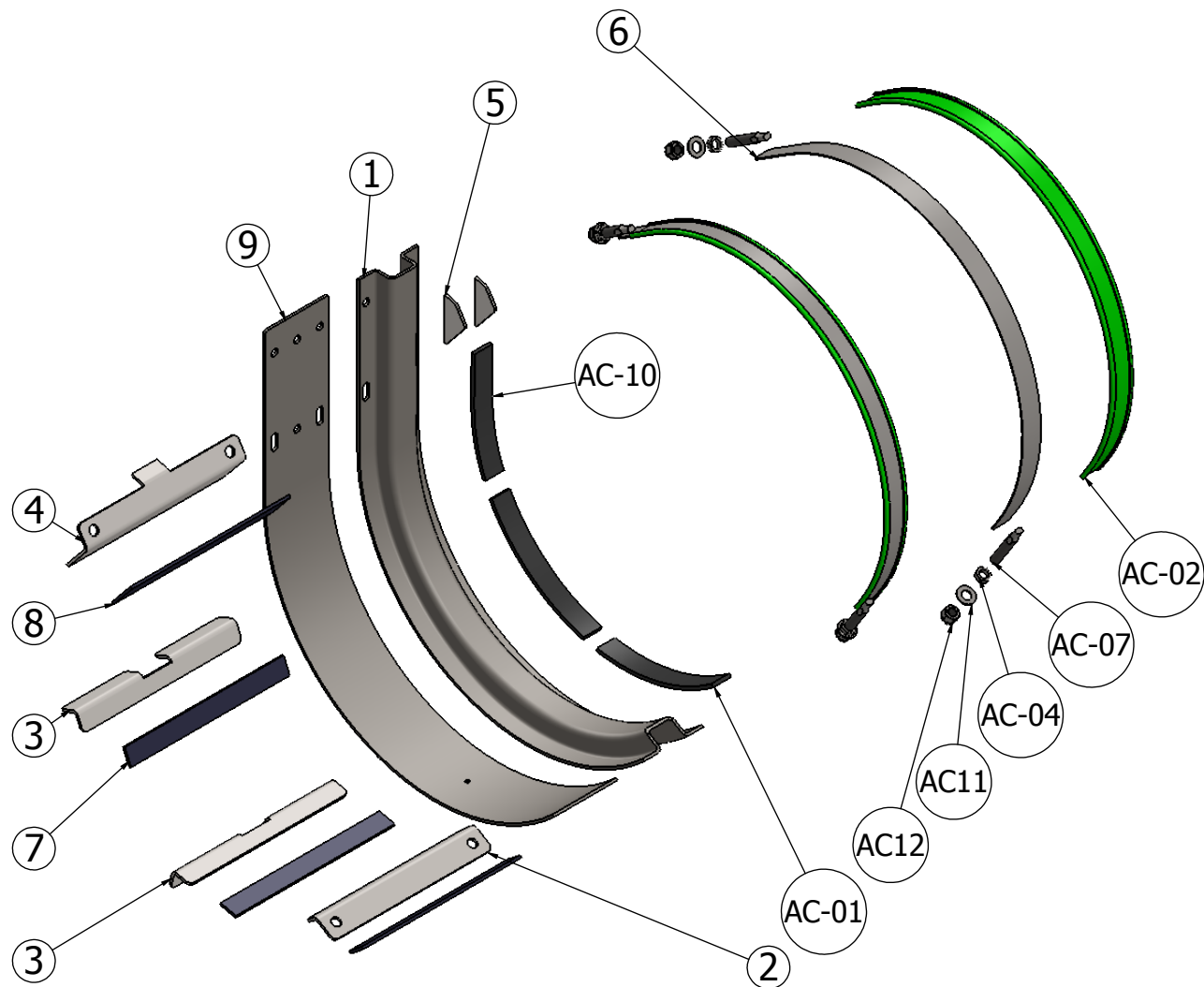
Part #	Code	Description	Material Spec	Size	Qty.	Unit	Total
1	901-040-0062-4	5(+/-0.25)mm thk 1500 x 3000 Hot Rolled Steel Sheet	SS400 JIS G3101	1500x187x5mm	1	Sheet	0.0623
2	901-040-0062-4	5(+/-0.25)mmT x 1500 x 3000 Hot Rolled Steel Sheet	SS400 JIS G3101	350x72.2x5mm	1	Sheet	0.0056
3	901-040-0062-4	5(+/-0.25)mmT x 1500 x 3000 Hot Rolled Steel Sheet	SS400 JIS G3101	350x70.8x5mm	2	Sheet	0.0110
4	901-040-0062-4	5(+/-0.25)mmT x 1500 x 3000 Hot Rolled Steel Sheet	SS400 JIS G3101	350x141.6x5mm	1	Sheet	0.0110
5	901-040-0062-4	5(+/-0.25)mmT x 1500 x 3000 Hot Rolled Steel Sheet	SS400 JIS G3101	92x44x5mm	2	Sheet	0.0018
6	N/A	2(+/-0.1)mm thk 1220x2440 Stainless Steel Flat Sheet	SUS304 JIS G4305	1039x40x2mm	2	Sheet	0.0000
7	N/A	EVA Rubber Sheet : 5mmT Cut To Size	Rubber	35x350x5mm	3	M2	0.0368
8	N/A	EVA Rubber Sheet : 5mmT Cut To Size	Rubber	65x350x5mm	1	M2	0.0227
9	901-040-0062-4	5(+/-0.25)mm thk 1500 x 3000 Hot Rolled Steel Sheet	SS400 JIS G3101	1205x140x5mm	1	Sheet	0.0000

List of Packing

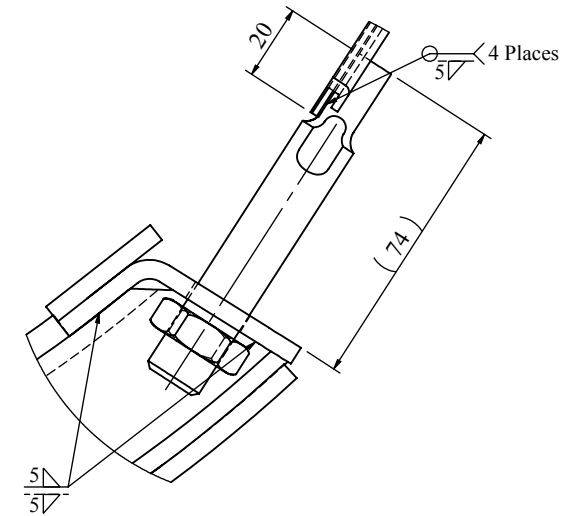
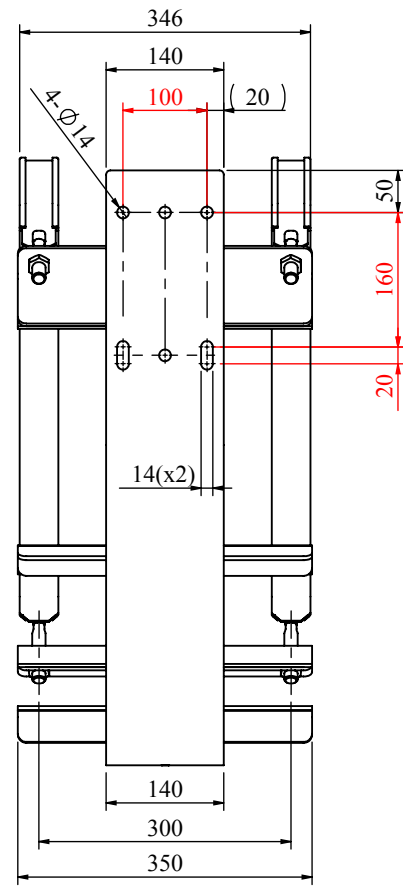
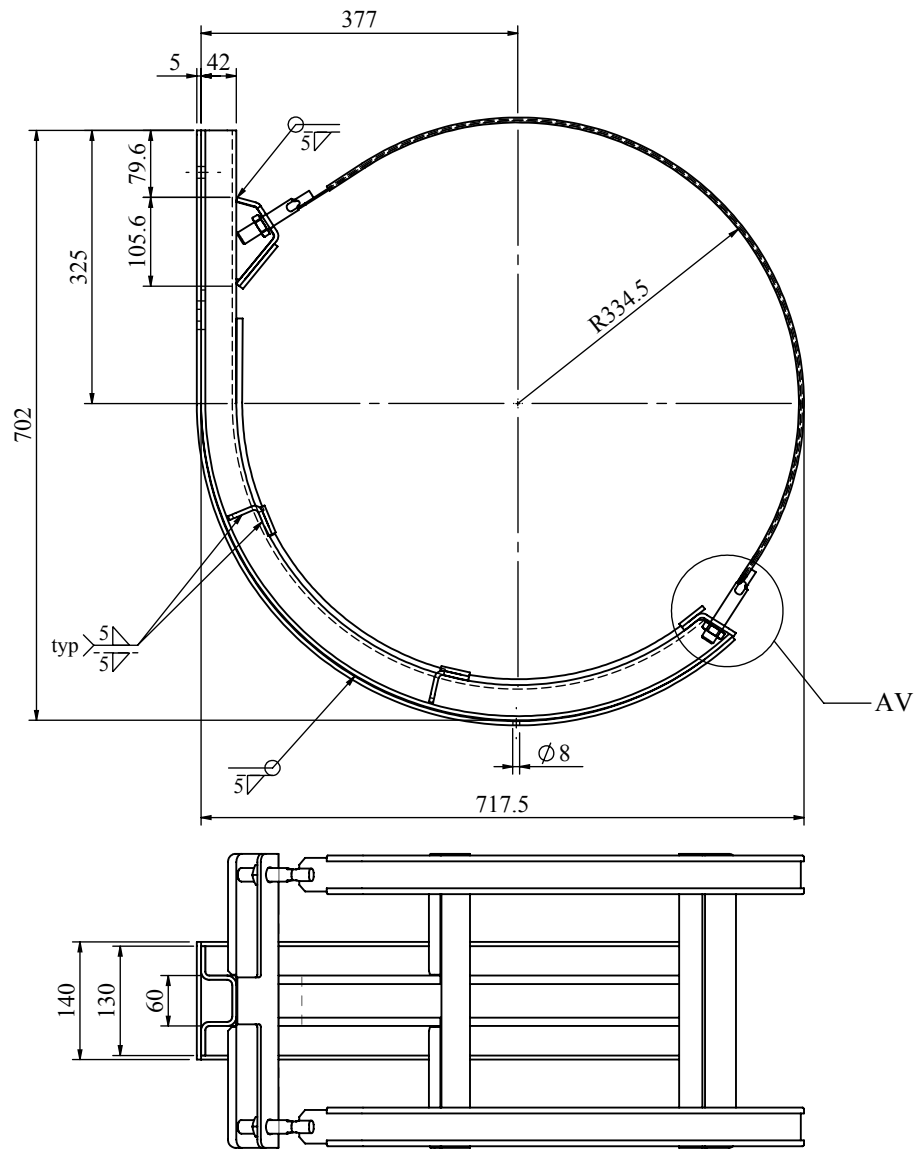
AC-01	915-500-0005	EVA Rubber Sheet Cut 40mm wide x 10mm thk	EVA	269mm	2	M	0.5380
AC-02	N/A	PVC Nitrile Strap: C section 40mmW x 2mmT	PVC Nitrile	995mm	2	M	1.9900
AC-04	914-040-0035	Hex Head Nut M16 x P2 / finished	Steel 8.8	-	4	Pcs	4
AC-07	914-361-0025	M16 x 1000mm L. Stainless Steel Thread Rod (Use Dimension Ø16x100mm)	Grade:304	Ø16xL100mm	4	M	0.4000
AC-10	915-500-0005	EVA Rubber Sheet Cut 40mm wide x 10mm thk	EVA	233mm	1	M	0.2330

Bolt Kid

AC11	914-098-0026	Flat Washer M16 x 17mm ID x 33mm OD x2.2mmT	S/Steel: 304	-	4	Pcs	4
AC12	914-047-0020	NYLOC Nut M16 / pitch 2	Stainless Steel Grade 304	-	4	Pcs	4



MO:	Batch:	Product Description: Reid&Twiname Cylinder Hydraulic Oil Tank Bracket 660mm Dia To Suit Aluminium Tank	0	25-06-2018	As Per Client's Request					V1422			
Quantity Batch:		Product Code: 001-002-2105NZ	PRO REV.	DATE	ALTERATION					AUTH.			
Contract #:		Dwg Description: ASSEMBLY 1 OF 2	Selection	0.5-3	>3-6	>6-30	>30-120	>120-400	>400-1000	>1000-2000	>2000-4000	>4000-8000	Angle Tolerance
Contract Ref:		Client: RED FLAG/REID & TWINAME		±0.05	±0.05	±0.1	±0.15	±0.2	±0.3	±0.5	±0.8	-	±1°
Approved By:	Date:	Client Dwg Ref: N/A		±0.1	±0.1	±0.2	±0.3	±0.5	±0.8	±1.2	±2	±3	
Signature By:	Date:	Client Rev: 0	➔	±0.15	±0.2	±0.5	±0.8	±1.2	±2	±3	±4	±5	
		Product Finish: Bracket : Black/Smooth/Matt 25+-5/RAL 9005 Strap : Mirror	NOTE: All dimensions in mm (unless noted otherwise)					W =22.39 (Kg)	Sheet 2 of 3		First Angle Projection		



DETAIL AV

MO:	Batch:	Product Description: Reid&Twiname Cylinder Hydraulic Oil Tank Bracket 660mm Dia To Suit Aluminium Tank	0	25-06-2018	As Per Client's Request					V1422			
Quantity Batch:		Product Code: 001-002-2105NZ	PRO REV.	DATE	ALTERATION					AUTH.			
Contract #:		Dwg Description: ASSEMBLY 2 OF 2	Selection	0.5-3	>3-6	>6-30	>30-120	>120-400	>400-1000	>1000-2000	>2000-4000	>4000-8000	Angle Tolerance
Contract Ref:		Client: RED FLAG/REID & TWINAME		±0.05	±0.05	±0.1	±0.15	±0.2	±0.3	±0.5	±0.8	-	±1°
Approved By:	Date:	Client Dwg Ref: N/A		±0.1	±0.1	±0.2	±0.3	±0.5	±0.8	±1.2	±2	±3	
Signature By:	Date:	Product Finish: Bracket : Black/Smooth/Matt 25+-5/RAL 9005 Strap : Mirror	➔	±0.15	±0.2	±0.5	±0.8	±1.2	±2	±3	±4	±5	
			NOTE: All dimensions in mm (unless noted otherwise)					W =22.39 (Kg)		Sheet 3 of 3		First Angle Projection	