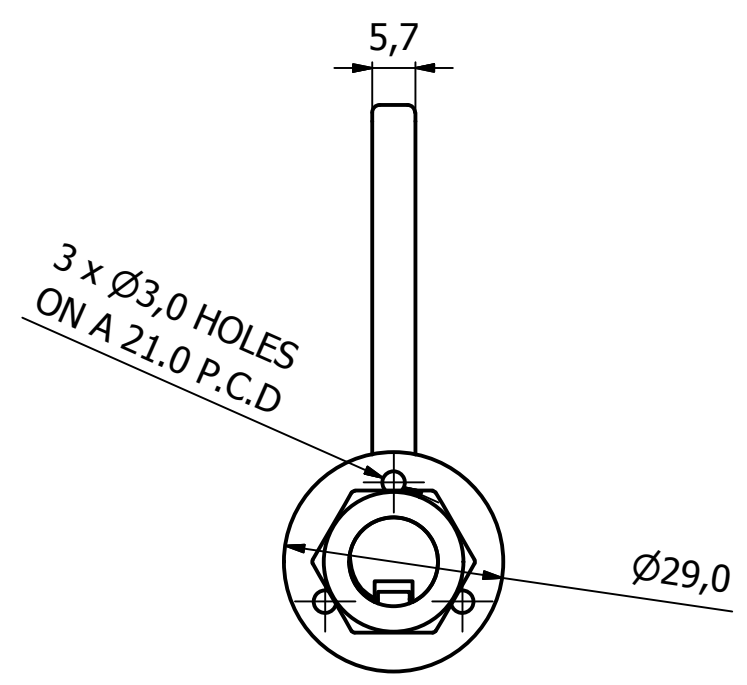
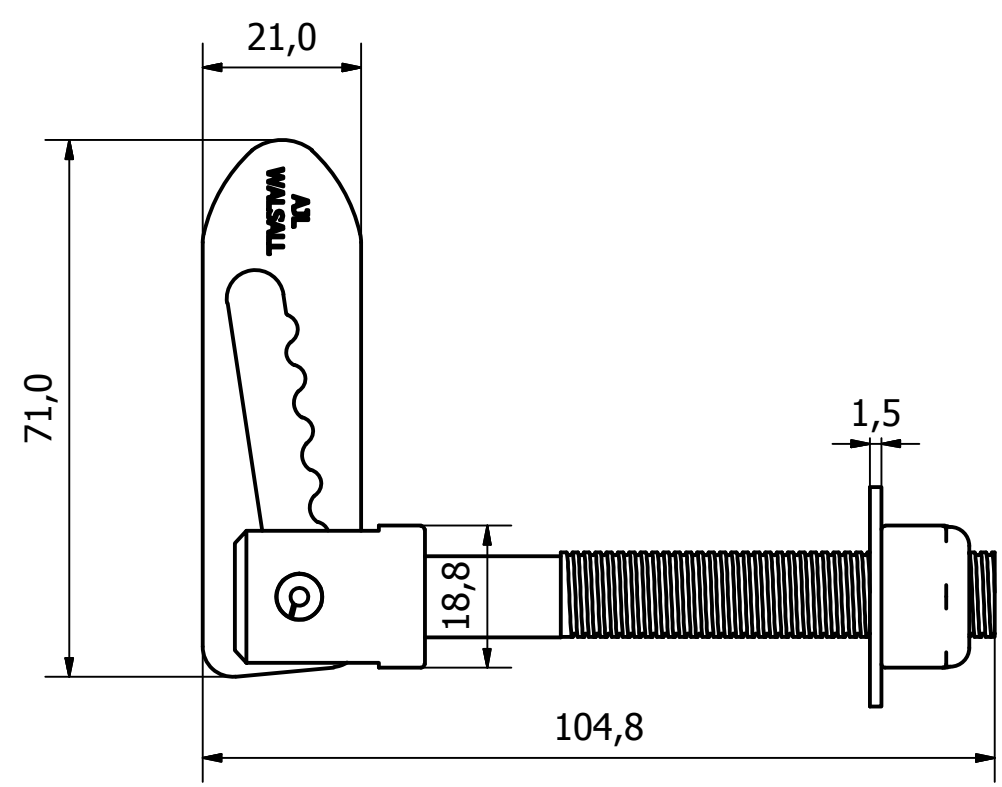
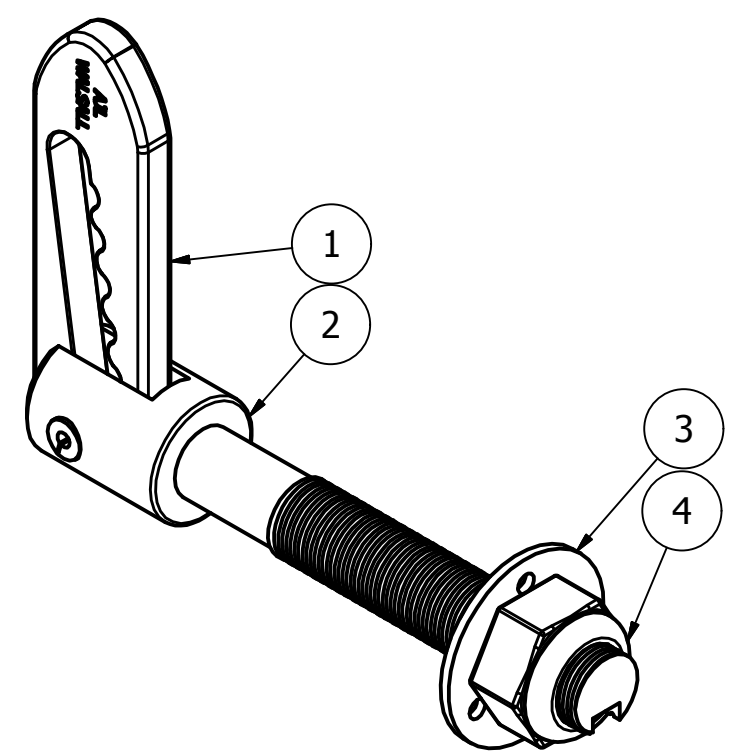
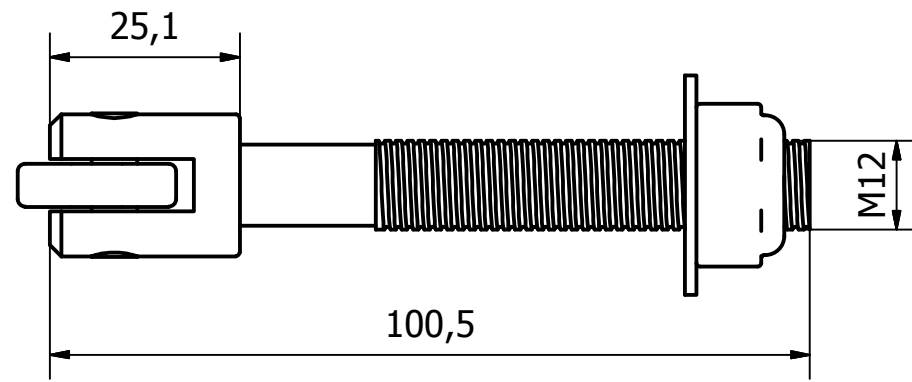


PARTS LIST			
ITEM	QTY	PART NUMBER	DESCRIPTION
1	1	3263-001-1	M/STEEL ANTILUCE COTTER
2	1	3244-001-1	M/STEEL ANTILUCE BARREL - M12 THREAD
3	1	3244-001-2	M/STEEL SLOT WASHER - 29 O/D
4	1	3244-001-3	M/STEEL M12 NYLOC NUT



GENERAL TOLERANCES ON LENGTHS	
0.5 - 6 ± 0.1mm	
6 - 30 ± 0.2mm	
30 - 120 ± 0.3mm	
120 - 400 ± 0.5mm	
400 - 1000 ± 0.8mm	
1000 - 2000 ± 1.2mm	
2000 - 4000 ± 2.0mm	

1	VALIDATION COMPLETE	05/07/17	A.P
REV	DESCRIPTION	DATE	APPROVED
U.F	A.P	12/04/2017	A3
DRAWN BY	CHECKED BY	SCALE	MATERIAL
U.F	A.P	1 : 1	-
MASS	FINISH	Date	ALL DIMS IN MM UNLESS STATED DO NOT SCALE
0.157 kg	Z/C PASSIVATE	12/04/2017	
M/STEEL ANTILUCE FASTENER - M12 C/W NUT AND SLOTTED WASHER			Edition
3244-001			1
			Sheet
			1 / 1