

## Fusion – Product information

Fusion is a high content wool moquette fabric with a great environmental profile. It's 10% lighter in weight compared to traditional pile fabrics, saving raw materials and giving fuel saving potential, without compromising technical performance.

Comprising a variety of designs, the range offers a mixed palette of subtle trend colours and traditional brights.

Contact	
UK Head Office:	+44 (0)1924 490491
Germany:	+49 172 1592 152
Poland:	+48 7982 272 67
USA:	+1 616 288 0655
Australasia:	+61 3 9832 0624

[www.camirafabrics.com](http://www.camirafabrics.com)



## Technical information

### UK

#### Composition

Pile:60% Wool, 16% Nylon, 13% Viscose,11% Polyester  
Backing: 67% Polyester, 33% Viscose

#### Width

150 cm

#### Weight

700 g/m<sup>2</sup> ±5%

#### Thickness

3.5±0.3 mm (BS 4051)

#### Breaking load

Warp: 700 N min Weft: 1000 N min  
(EN ISO 13934-1, DIN 53847)

#### Extension at break

5-15% minimum (EN ISO 13934-1)

#### Burst strength

1000 kPa min (EN ISO 13938-1)

#### Abrasion Resistance

≥80,000 Martindale cycles (EN ISO 12947)

#### Flammability

ECE Regulation No. 118 Parts 1 & 2  
FMVSS 302

#### Light Fastness

6 (EN ISO 105 B02)

#### Fastness to Rubbing

Wet: 4 Dry: 4 (EN ISO 105 X12)

#### Fastness to Water

Change in shade: 4 min Staining: 4 min  
(EN ISO 105 E01)

#### Dry Cleaning

Change in shade: 4 min  
Staining: 4 min  
(EN ISO 105 D01)

#### Spotting (EN ISO 105)

E07 (water): 4 min  
E05 (acid): 4 min  
E06 (alkali): 4 min

#### Shampoo (1006 UK-TB)

Shade change: 4 min  
Staining wool: 4 min  
Staining cotton: 4 min

#### Maintenance

Vacuum regularly. Wipe clean with a damp cloth or shampoo using proprietary upholstery shampoo.

#### Colour Matching

Batch to batch variations in shade may occur within commercial tolerances.

The Unregistered Design Rights and the Copyright in all designs are the exclusive property of Camira Fabrics Limited.

### D

#### Zusammensetzung

Oberfläche:60% Wolle, 16% Nylon,13% Viscose, 11% Polyester  
Trägergewebe: 67% Polyester, 33% Viscose

#### Breite

150 cm

#### Gewicht

700 g/m<sup>2</sup> ±5%

#### Dicke

3.5±0.3 mm (BS 4051)

#### Höchstzugkraft

Kette: 700 N min Schuss: 1000 N min  
(EN ISO 13934-1, DIN 53847)

#### Höchstzugkraftdehnung

5-15% minimum (EN ISO 13934-1)

#### Berstdruck

1000 kPa min (EN ISO 13938-1)

#### Scheuerfestigkeit

≥80,000 Martindale Scheuertouren (EN ISO 12947)

#### Feuersicherung

ECE Regulation No. 118 Parts 1 & 2  
FMVSS 302

#### Lichtechtheit

6 (EN ISO 105 B02)

#### Reibechtheit

Nass: 4 Trocken: 4 (EN ISO 105 X12)

#### Farbchtheit gegen Wasser

Farbveränderung: 4 min Anfärben: 4 min  
(EN ISO 105 E01)

#### Trockenreinigung

Farbveränderung: 4 min  
Anfärben: 4 min  
(EN ISO 105 D01)

#### Farbchtheit gegen Flecken (EN ISO 105)

E07 (Wasser): 4 min  
E05 (Säure): 4 min  
E06 (Lauge): 4 min

#### Polsterschaum (1006 UK-TB)

Farbveränderung: 4 min  
Anfärben von Wolle: 4 min  
Anfärben von Baumwolle: 4 min

#### Reinigung

Regelmässig staubsaugen. Dazu mit einem feuchten Tuch abwischen, oder mit einem speziellen Polsterschaum behandeln.

#### Farbabweichungen

Handelsübliche Farbabweichungen vorbehalten.

Die registrierten und nicht registrierten Urheberrechte der Dessinierungen sind ausschliessliches Eigentum der Camira Fabrics Limited.

### F

#### Composition

Surface: 60% Laine, 16% Nylon, 13% Viscose, 11% Polyester  
Couche Inférieure: 67% Polyester, 33% Viscose

#### Poids

150 cm

#### Largeur

700 g/m<sup>2</sup> ±5%

#### Epaisseur

3.5±0.3 mm (BS 4051)

#### Résistance à la traction

Chaîne: 700 N min Trame: 1000 N min  
(EN ISO 13934-1, DIN 53847)

#### Allongement à la rupture par traction

5-15% minimum (EN ISO 13934-1)

#### Résistance à l'éclatement

1000 kPa min (EN ISO 13938-1)

#### Résistance à l'abrasion

≥80,000 Martindale tours (EN ISO 12947)

#### Flammabilité

ECE Regulation No. 118 Parts 1 & 2  
FMVSS 302

#### Solidité à la lumière

6 (EN ISO 105 B02)

#### Solidité au frottement

Mouillé: 4 Sec: 4 (EN ISO 105 X12)

#### Solidité contre tâches

Dégorgement: 4 min Tâches: 4 min  
(EN ISO 105 E01)

#### Nettoyage à sec

Changement de teinte: 4 min  
Tâches: 4 min  
(EN ISO 105 E01)

#### Solidité des couleurs (EN ISO 105)

E07 (l'eau): 4 min  
E05 (acide): 4 min  
E06 (alcaline): 4 min

#### Shampooing (1006 UK-TB)

Changement de teinte: 4 min  
Tâche sur laine: 4 min  
Tâche sur coton: 4 min

#### Nettoyage

Aspirer régulièrement. Essuyer avec une étoffe humide ou nettoyer à l'aide d'un produit approprié pour tissus d'ameublement.

#### Standardisation des coloris

Variations de coloris d'un bain à un autre peuvent se manifester.

Les Droits de Conception non-enregistrés et les droits d'auteur de tous les motifs sont la propriétés exclusives de Camira Fabrics Limited.

# camira

style with substance

[www.camirafabrics.com](http://www.camirafabrics.com)

# Fusion



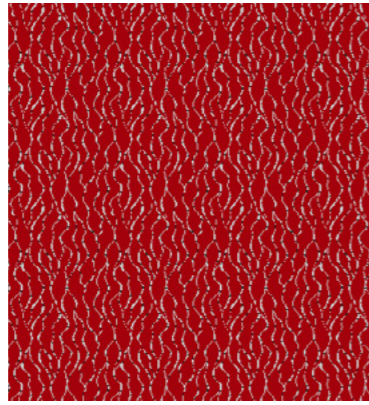
Transport



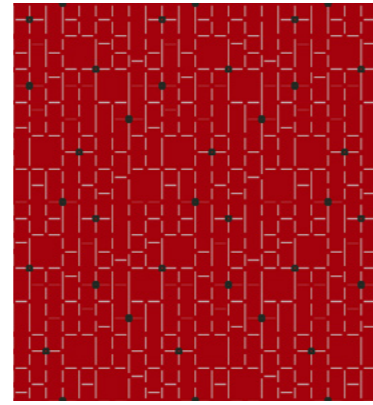
Year guarantee



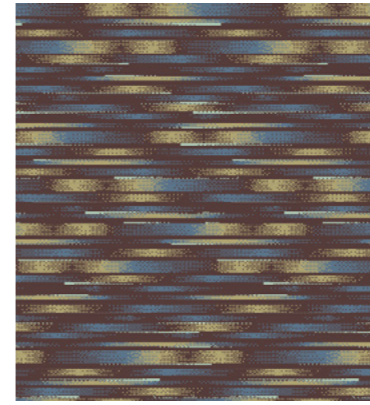
NAEB11



NBSB11



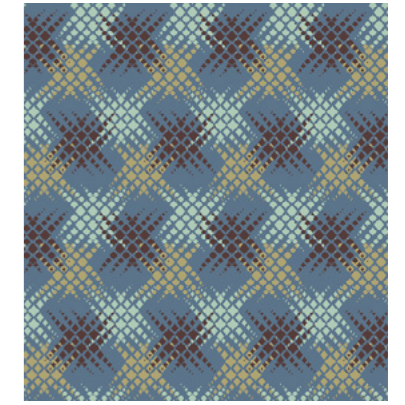
NBTB11



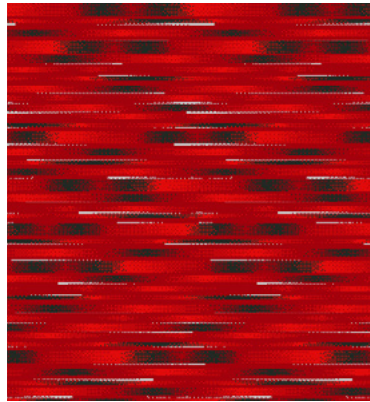
NBXB07



NADB07



NBVB07



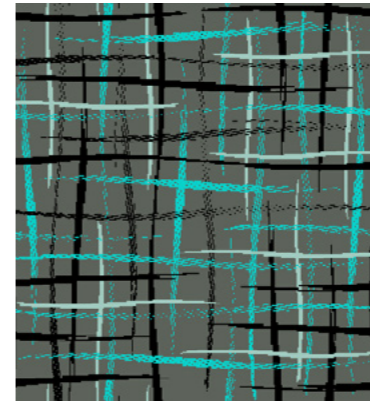
NBXB11



NBRB11



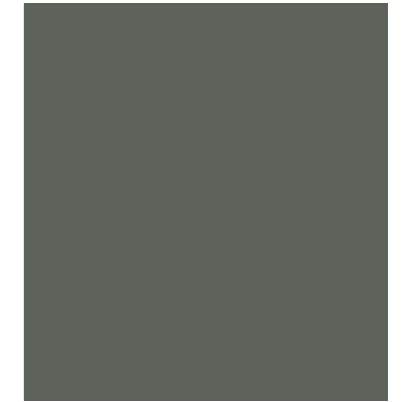
NBRB12



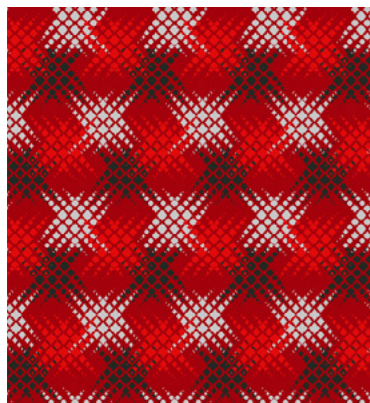
NUB10



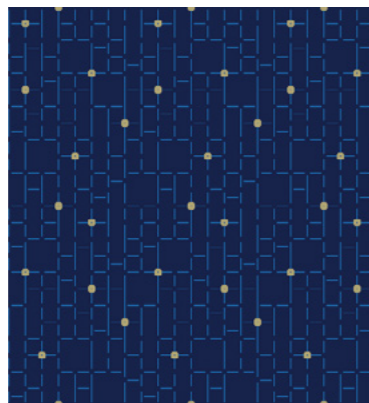
NUB07



NADB10



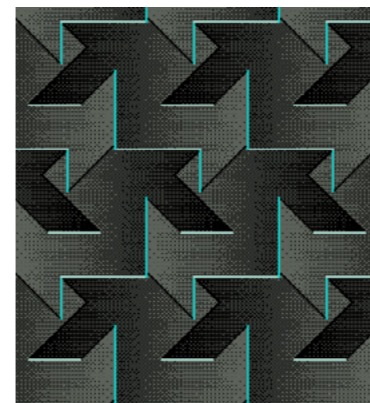
NBPB11



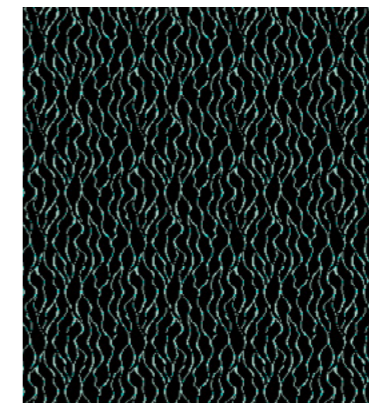
NBTB12



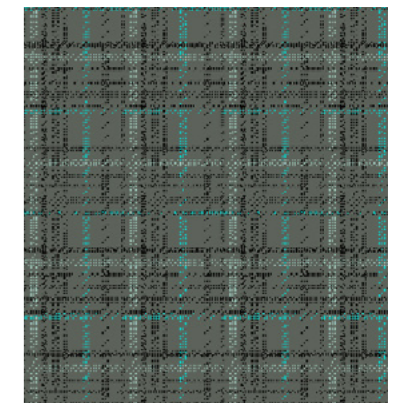
NAEB12



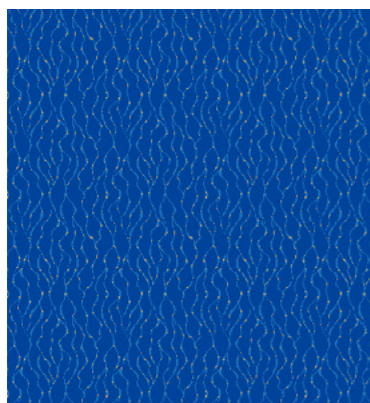
NBWB10



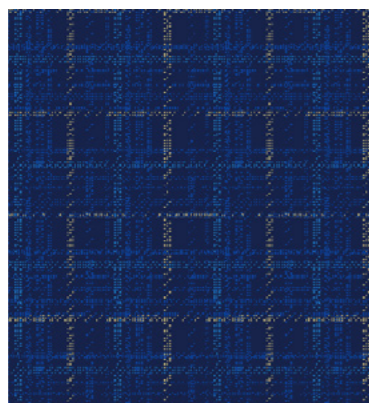
NBSB10



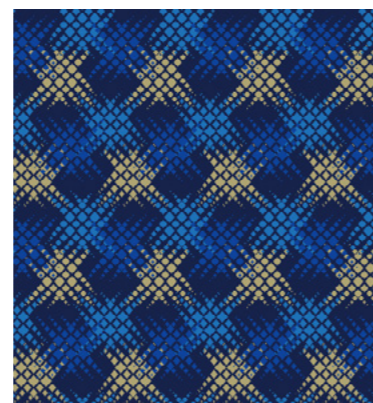
NCBB10



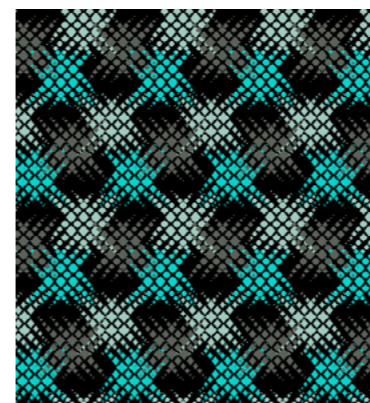
NCAB12



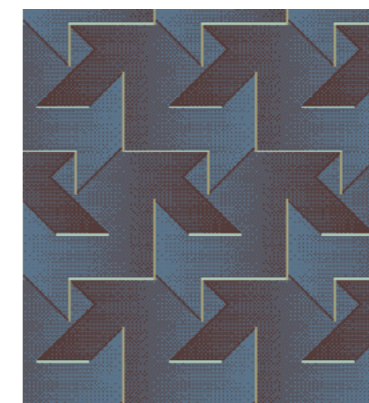
NBYB12



NBPB12



NBPB10

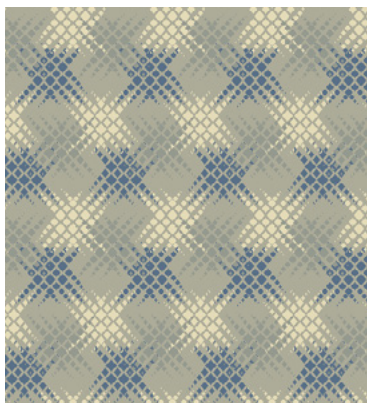


NBWB07

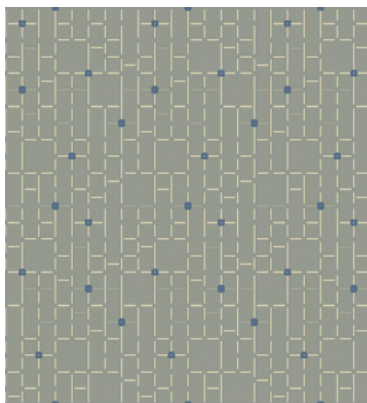


NBYB07

**Note:** Fabric images may not be colour accurate. Always request fabric samples before ordering.



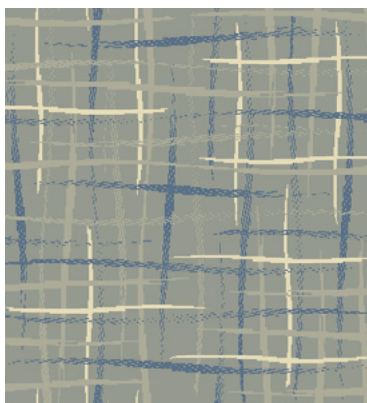
**NBBV08**



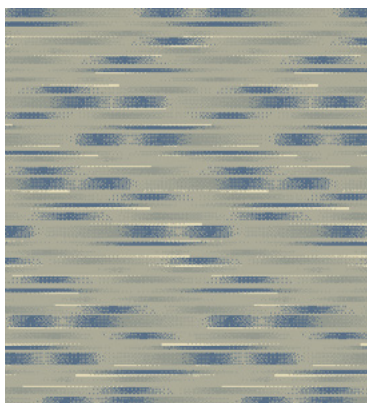
**NBTB08**



**NAEB08**



**NBRB08**



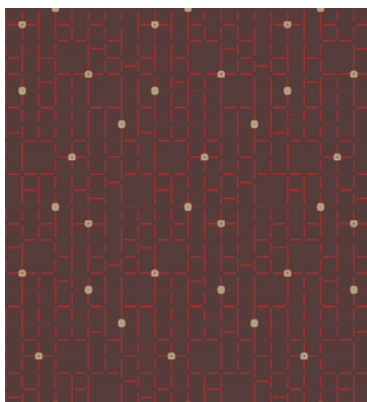
**NBQB08**



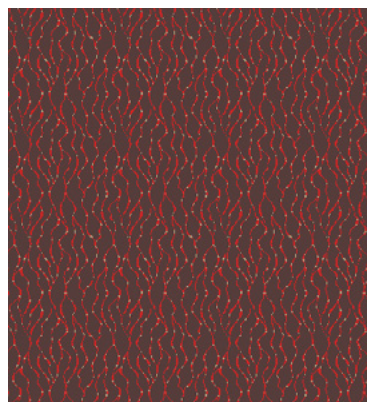
**NBSB08**



**NBRB09**



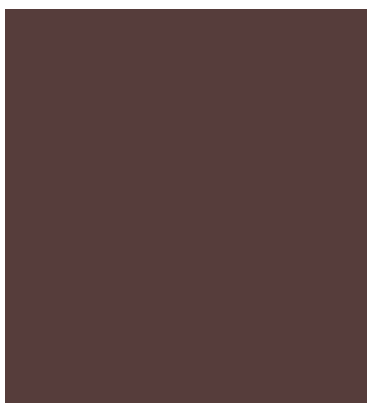
**NBTB09**



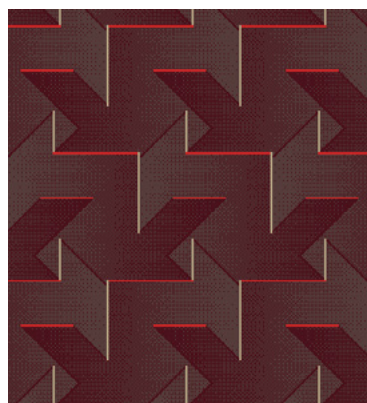
**NBSB09**



**NBYB09**



**NAEB09**



**NBZB09**