

Aura Twist – Product information

Aura Twist is a stylish wool rich moquette, reviving a textile classic which is re-interpreted into modern, geometric inspired designs on a darker background with carefully selected accent colourways. The distinctive designs combine linear, architectural and structural patterning in a variety of scales, with the highlight colours coordinating with other complementary finishes in our leather, vinyl and flat woven ranges.

Aura Twist can also be made to order using colours from our Aura Classic range.

Contact	
UK Head Office:	+44 (0)1924 490491
Germany:	+49 172 1592 152
Poland:	+48 7982 272 67
USA:	+1 616 288 0655
Australasia:	+61 3 9832 0624

www.camirafabrics.com



Technical information

UK

Composition

Pile: 70% Wool, 12% Nylon, 18% Polyester (with effect yarn)
Pile: 85% Wool, 15% Nylon (without effect yarn)
Ground: 100% Cotton

Width

150 cm minimum

Weight

820 g/m² ±5%

Thickness

4.2±0.3mm (BS 4051)

Breaking load

Warp: 650 N min Weft: 650 N min
(BS EN ISO 13934-1)

Extension at break

5 - 15% (BS EN ISO 13934-1)

Burst strength

1000 kN/m² min (BS EN ISO 13938-1)

Abrasion Resistance

≥80,000 Martindale cycles (BS EN ISO 12947)

Flammability

ECE Reg. 118 Parts 1 & 2
Composite:
BS 5852 Ignition Source 7 (when FR treated)

Light Fastness

6 (BS EN ISO 105 B02)

Fastness to Rubbing

Wet: 4 Dry: 4 (BS EN ISO 105 X12)

Acid / Alkali Perspiration

Change in shade: 4 Staining: 4
(BS EN ISO 105 E04)

Spotting (BS EN ISO 105)

E07 (water): 4 minimum
E05 (acid): 4 minimum
E06 (alkali): 4 minimum

Shampoo (BS 1006 UK-TB)

Shade change: 4 minimum
Staining wool: 4 minimum
Staining cotton: 4 minimum

Maintenance

Vacuum regularly. Wipe clean with a damp cloth or shampoo using proprietary upholstery shampoo.

Colour Matching

Batch to batch variations in shade may occur within commercial tolerances.

The Unregistered Design Rights and the Copyright in all designs are the exclusive property of Camira Fabrics Limited.

D

Zusammensetzung

Oberfläche: 70% Wolle, 12% Nylon,
18% Polyester (mit effect yarn)
Oberfläche: 85% Wolle, 15% Nylon (ohne effect yarn)
Trägergewebe: 100% Baumwolle

Breite

150 cm nutzbare Breite

Gewicht

820 g/m² ±5%

Dicke

4.2±0.3mm (BS 4051)

Höchstzugkraft

Kette: 650 N min Schuss: 650 N min
(BS EN ISO 13934-1)

Höchstzugkraftdehnung

5 - 15% (BS EN ISO 13934-1)

Berstdruck

1000 kN/m² min (BS EN ISO 13938-1)

Scheuerfestigkeit

≥80,000 Martindale Scheuertouren (BS EN ISO 12947)

Feuersicherung

ECE Reg. 118 Parts 1 & 2
Composite:
BS 5852 Ignition Source 7 (wenn mit FR ausgerüstet)

Lichtechtheit

6 (BS EN ISO 105 B02)

Reibechtheit

Nass: 4 Trocken: 4 (BS EN ISO 105 X12)

Acid / Alkali Schweiß

Farbveränderung: 4 Anfärben: 4
(BS EN ISO 105 E04)

Farblichkeit gegen Flecken (BS EN ISO 105)

E07 (Wasser): 4 minimum
E05 (Säure): 4 minimum
E06 (Lauge): 4 minimum

Polsterschaum (BS 1006 UK-TB)

Farbveränderung: 4 minimum
Anfärben von Wolle: 4 minimum
Anfärben von Baumwolle: 4 minimum

Reinigung

Regelmässig staubsaugen. Dazu mit einem feuchten Tuch abwischen, oder mit einem speziellen Polsterschaum behandeln.

Farbabweichungen

Handelsübliche Farbabweichungen vorbehalten

Die registrierten und nicht registrierten Urheberrechte der Dessinierungen sind ausschliessliches Eigentum der Camira Fabrics Limited.

F

Composition

Surface: 70% Laine, 12% Nylon,
18% Polyester (avec effect yarn)
Surface: 85% Laine, 15% Nylon (sans effect yarn)
Couche Inférieure: 100% Coton

Largeur

150 cm minimum

Poids

820 g/m² ±5%

Épaisseur

4.2±0.3mm (BS 4051)

Résistance à la traction

Chaîne: 650 N min Trame: 650 N min
(BS EN ISO 13934-1)

Allongement à la rupture par traction

5 - 15% (BS EN ISO 13934-1)

Résistance à l'éclatement

1000 kN/m² min (BS EN ISO 13938-1)

Résistance à l'abrasion

≥80,000 Martindale tours (BS EN ISO 12947)

Flammabilité

ECE Reg. 118 Parts 1 & 2
Composite:
BS 5852 Ignition Source 7 (si traitement FR)

Solidité à la lumière

6 (BS EN ISO 105 B02)

Solidité au frottement

Mouillé: 4 Sec: 4 (BS EN ISO 105 X12)

Transpiration Acid / Alcaline

Dégorgement: 4 Tâches: 4
(BS EN ISO 105 E04)

Solidité des couleurs (BS EN ISO 105)

E07 (l'eau): 4 minimum
E05 (acide): 4 minimum
E06 (alcaline): 4 minimum

Shampooing (BS 1006 UK-TB)

Changement de teinte: 4 minimum
Tâche sur laine: 4 minimum
Tâche sur coton: 4 minimum

Nettoyage

Aspirer régulièrement. Essuyer avec une étoffe humide ou nettoyer à l'aide d'un produit approprié pour tissus d'ameublement.

Standardisation des coloris

Variations de coloris d'un bain à un autre peuvent se manifester.

Les Droits de Conception non-enregistrés et les droits d'auteur de tous les motifs sont la propriétés exclusives de Camira Fabrics Limited.

camira

style with substance

www.camirafabrics.com

Aura Twist



Transport seating



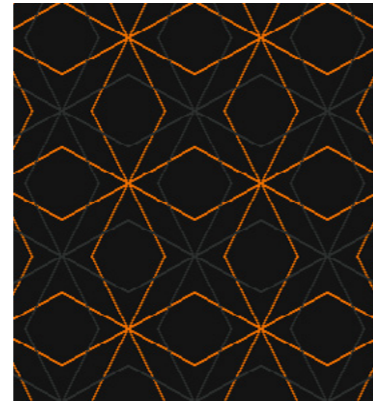
Reg. 118



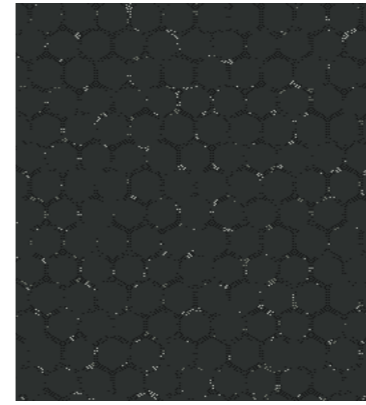
Year guarantee



CCFC11



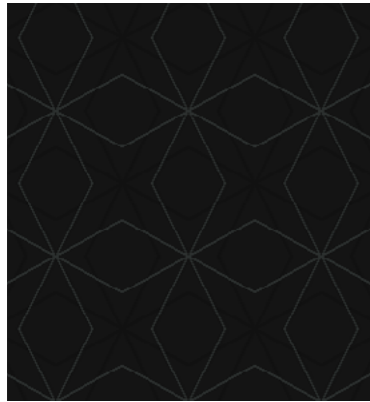
CCDC11



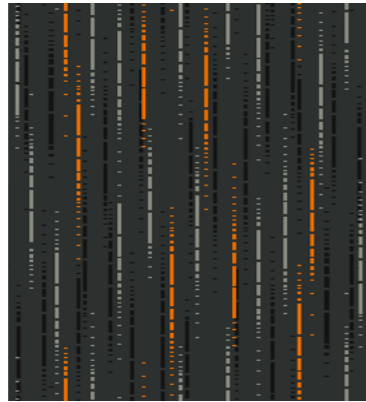
CCHB96



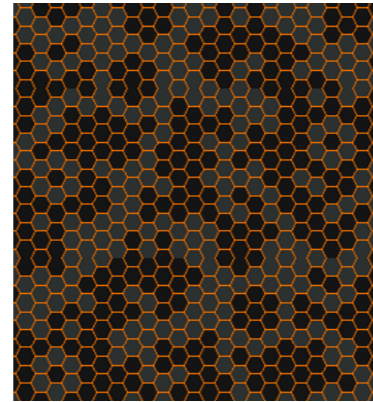
CCLB96



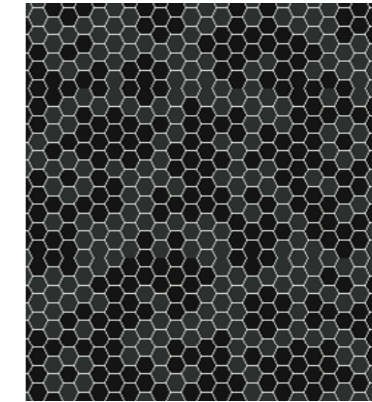
CCDC12



CCGC11



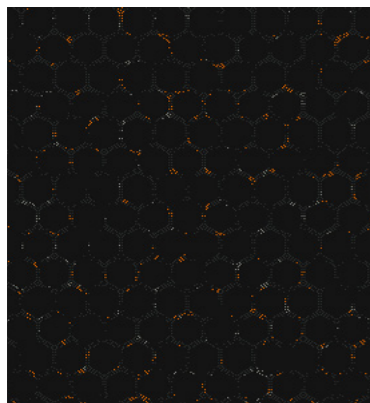
CCCC11



CCCB96



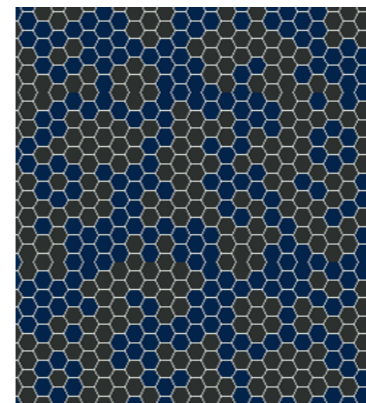
CCKB96



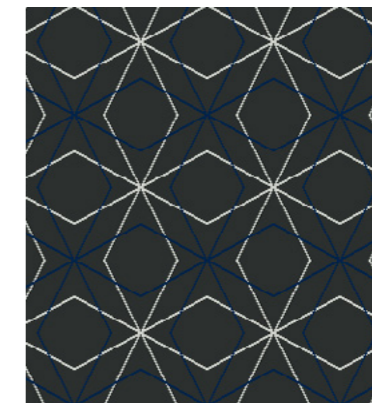
CCEC11



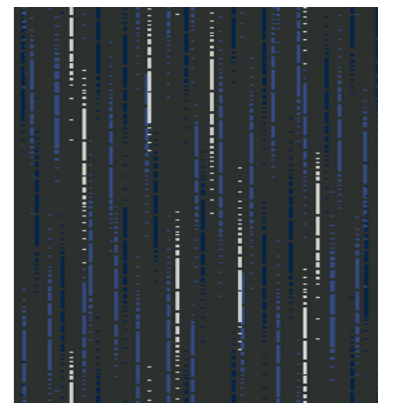
CCCC12



CCPC14



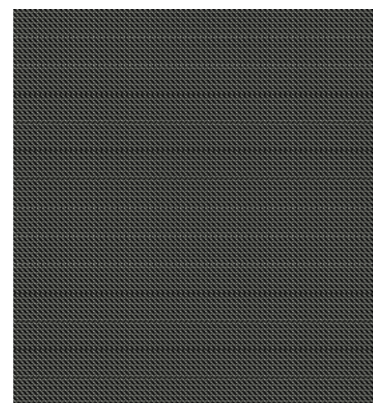
CCRC14



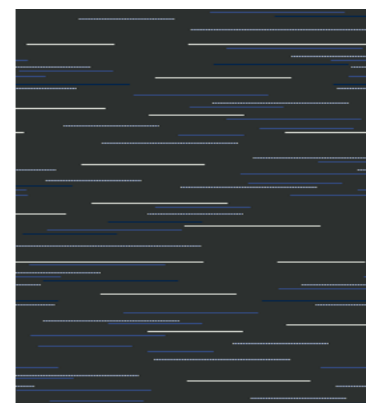
CCQC14



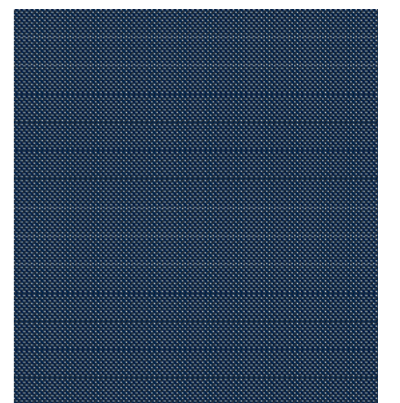
CCJB96



CCFB96



CCMC14



CCNC14